



Gyprock Pro-Repair 10

Pro-Repair 10 is a lightweight plaster based all-purpose compound used for all coats in a three-coat jointing system or as a base coat only. This low VOC dry powder has been engineered with a super fast 10 minute working time after mixing. Use Pro-Repair 10 for all three coats with FibaFuse tape to ensure the project can be jointed and sanded on the same day after sufficient drying time. Pro-Repair 10 has a re-coat time of 30 minutes and is tinted orange for easy identification.

Recommended Use

Gyprock Pro-Repair 10 is used for all three coats in a three-coat plasterboard jointing system, suitable for plasterboard and fibre cement in smaller residential and commercial wall and ceiling jointing projects. It provides excellent tape adhesion when used for the base coat and second coat. To achieve the fastest drying time it is recommended Gyprock Pro-Repair is used for all three coats and in conjunction with Gyprock FibaFuse Tape

Important

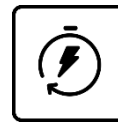
- Do not use Pro-Repair 10 for larger scale projects.
- Fresh batches of Gyprock Pro-Repair 10 should be kept free of previous batches, otherwise the working life will be shortened.
- Allow Gyprock Pro-Repair 10 to set completely in between coat applications.
- The use of another topping compound with Pro-Repair 10 will lengthen drying time to 24 hours.
- Gyprock Pro-Repair 10 is designed for hand application.
- When using Gyprock Pro-Repair 10 for the final coat, do not overfill the joint as the compound has very low shrinkage.
- Always use containers and equipment
- Thoroughly clean tools after use.
- Ensure surfaces are free from dust or dirt.

Storage

Store plaster in a dry place. Do not place bags directly on concrete floors or damp ground. Long term storage may affect the plaster setting time and finish quality.

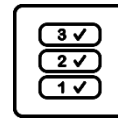


Product Features



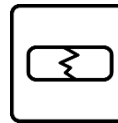
Rapid Setting Time

Defined 10 minute working time



All-Purpose

Used for all coats in a three-coat jointing system



Repairs and Maintenance

Ideal for patching holes, nicks and cracks in existing or new plasterboard



Light Weight

Light weight compound that provides same coverage as standard 10kg weight compound



Australian Made and Owned

Licensed by Australian Made Campaign Ltd

Gyprock Pro-Repair 10 Specifications	
Feature	Description
Colour	Orange tint
Size	8kg
Coverage	13kg/100m ²
Packaging	Non re-sealable bag
Shelf Life	12 months from date of manufacture
Specific Gravity	1.0-1.6
Product Manufacture	Gyprock Pro-Repair 10 is manufactured by CSR Gyprock in Australia and made to stringent product specifications.



Plasterboard Finishing

Jointing and finishing of Gyprock plasterboard interior installations with Gyprock Pro-Repair 10 is to be carried out in accordance with **FIGURE 1** and **TABLE 1** in this document, and the following details, so as to provide a smooth surface for decorating. Stopping and external corner beads are to be applied to all edges subject to damage. A Level 4 Finish is generally the accepted level of finish for residential construction as detailed in AS/NZS2589.1 and is also recommended for commercial construction. This requires a three-coat system, consisting of:

- Tape and tape coat
- Second coat and
- Finish (or topping) coat.

FIGURE 1: SELECTING A LEVEL OF FINISH

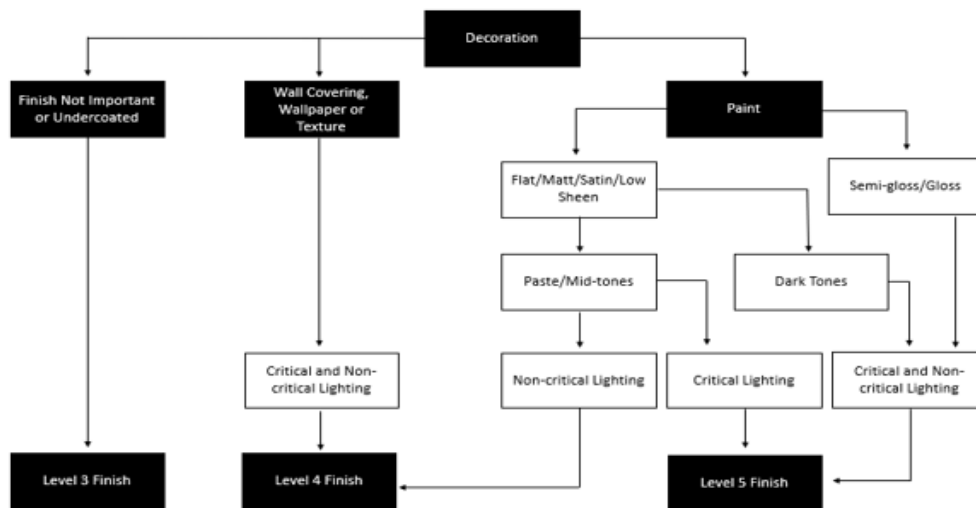


TABLE 1: MINIMUM DRYING TIMES FOR THIRD OR TOP COAT

Third Coat Product	Jointing Tape Used	Approx Drying Time Required			
		<20°C	20°C 50% relative humidity	25°C 50% relative humidity	>30°C 50% relative humidity
Gyprock Pro-Repair 10	FibaFuse Tape	24 hours	5 hours	4 hours	3 hours
Gyprock Topping & All-purpose compounds	Gyprock Paper Tape	24 hours	24 hours	24 hours	24 hours
	All Tapes	24 hours	24 hours	24 hours	24 hours

*All times are a guide, best results are achieved with longer drying times



Hand Application

First coat

1. Fill recess even and fully with compound
2. Bed in Gyprock Perforated Paper tape or Gyprock Fiba-Fuse Tape centrally over the joint and cover lightly with compound. Apply at least 1mm thickness of compound under the tape.
3. Bed tapes to butt joints and internal corner angles. Apply at least 1mm thickness of compound under the tape.
4. Cover all metal bead corner beads and fastener heads.
5. Allow compound to set and harden for at least 30 minutes before recoating.

Second Coat

1. Apply a second coat of Gyprock Pro-Repair 10 to
 - (a) Recessed edge joints to a width of about 180mm
 - (b) Butt joints to a width of about 400mm
 - (c) Metal corner beads to a width of about 200mm
 - (d) Fastener heads
2. Allow compound to set and harden before recoating. Ideally, the joint should be fully dry before the final coat is applied.

Finishing Coat

Apply a thin coat of Gyprock Pro-Repair 10 or any Gyprock topping or all-purpose compound. Allow approximately 24 hours for it to dry.

Sanding

Sand to a smooth finish using 180 grit sandpaper or 180-220 grit sanding mesh.

Painting

Apply all paints in accordance with paint manufacturer's recommendations.

Installing to Standards

Installing to Standards AS/NZS2589: Gypsum linings – Application and Finishing outlines the procedures for jointing and finishing of Gyprock plasterboard in conjunction with additional details contained in Gyprock Technical Literature.

Health and Safety

Refer to the Safety Data Sheet for this product which is available from www.gyprock.com.au or contact:

CSR Gyprock

Trinity 3, 39 Delhi Rd, North Ryde NSW 2113

Australia Phone: **131 744**

New Zealand Phone: **0800 277 123**

Resources

For further information on this product please visit www.gyprock.com.au or refer to the Gyprock Red Book. For technical support, contact:

DESIGNLINK™

PHONE: 1800 621 117

Manufactured For Life Warranty

Gyprock products are manufactured for life with all CSR products designed to achieve optimal performance when part of a CSR integrated system. Gyprock continues to lead the market with premium quality products which are the preferred choice of plastering professionals. Gyprock plasterboard products are manufactured to the Australian Standards AS2588 providing confidence in quality of product and support. For details on our product warranty, please log onto www.gyprock.com.au/warranty, or contact us on **1300 306 556**.



Licensed by Australian Made Campaign Limited to use the Australian Made Logo.



Verified by an independent conformity assessment body to meet the environmental, health and social/ethical criteria of the GECA Panel Boards standard



Gyprock plasterboard products are manufactured for life with all CSR products designed to achieve optimal performance when part of a CSR integrated system.