



Gyprock Plaster Accelerator

Gyprock Plaster Accelerator is a safe and easy way to speed up the setting times of gypsum-based plaster products such as Base Coat, Cornice Cement and other specialty plasters.

Recommended Use

Gyprock Plaster Accelerator can be added and mixed thoroughly into dry or wet plaster mix to speed up setting times, making it ideal for small projects where time is an issue.

Important

- Do not add plaster mix directly to water prior to adding to a dry or wet mix of Base Coat, Cornice Cement or plaster powder.
- Ensure surfaces are clean from dust or dirt.
- Always use clean tools.

Storage

To ensure reliable performance, Gyprock Plaster Accelerator should be stored under cover in a dry environment. A partially used bag should be tightly closed and ideally kept in a clean sealed container or bucket.

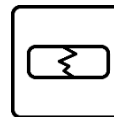


Product Features



Plaster Accelerator

Reduced setting time



Repairs

Used for repairs and maintenance



Australian Made

Licensed by Australian Made Campaign Ltd

Gyprock Plaster Accelerator Specifications	
Feature	Description
Colour	Off White
Packaging	10kg non re-sealable bag
Shelf Life	12 months from date of manufacture
Specific Gravity	2.3
VOC Content (as specified by GBCA)	2g/L as VOC Content per material
Product Manufacture	Gyprock Plaster Accelerator is manufactured by CSR Gyprock in Australia and made to stringent product specifications.



Plasterboard Finishing

Finishing of Gyprock plasterboard interior installations is to be carried out in accordance with **FIGURE 1**, in this document, and the following details, so as to provide a smooth surface for decorating. Stopping and external corner beads are to be applied to all edges subject to damage. A Level 4 Finish is generally the accepted level of finish for residential construction as detailed in AS/NZS2589.1 and is also recommended for commercial construction. This requires a three-coat system, consisting of:

- Tape and tape coat
- Second coat and
- Finish (or topping) coat.

FIGURE 1: SELECTING A LEVEL OF FINISH

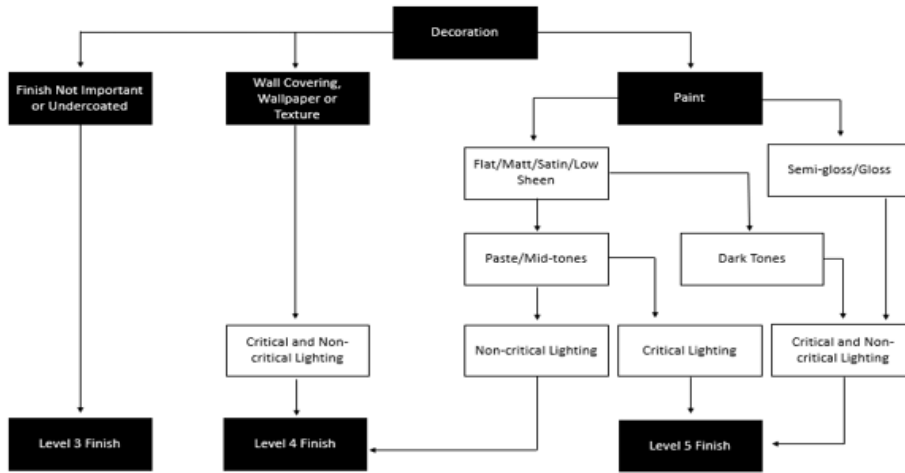


TABLE 1: MINIMUM SET TIMES OF BASE COAT WITH ADDITIONAL PLASTER ACCELERATOR

Accelerator Amount	Approximate Set Time (minutes)			
	Base Coat 20	Base Coat 45	Base Coat 60	Base Coat 90
Tablespoon* per 20kg bag				
1	10	30	40	45
2	7	25	35	40
4	-	15	25	30

TABLE 2: MINIMUM SET TIMES OF CORNICE CEMENT WITH ADDITIONAL PLASTER ACCELERATOR

Accelerator Amount	Approximate Set Time (minutes)	
	Cornice Cement 60	Cornice Cement 45
Tablespoon* per 20kg bag		
1	25	13
2	15	10

*Note: 1 tablespoon = 20 grams. Times indicated are a guide only.

Installing to Standards

Installing to Standards AS/NZS2589: Gypsum linings – Application and Finishing outlines the procedures for jointing and finishing of Gyprock plasterboard in conjunction with additional details contained in Gyprock Technical Literature.

Health and Safety

Refer to the Safety Data Sheet for this product which is available from www.gyprock.com.au or contact:
CSR Gyprock
Trinity 3, 39 Delhi Rd, North Ryde NSW 2113
Australia Phone: **131 744**
New Zealand Phone: **0800 277 123**

Resources

For further information on this product please visit www.gyprock.com.au or refer to the Gyprock Red Book Residential and Commercial Installation Guides. For technical support, contact:

Manufactured For Life Warranty

Gyprock products are manufactured for life with all CSR products designed to achieve optimal performance when part of a CSR integrated system. Gyprock continues to lead the market with premium quality products which are the preferred choice of plastering professionals. Gyprock plasterboard products are manufactured to the Australian Standards AS2588 providing confidence in quality of product and support. For details on our product warranty, please log onto www.gyprock.com.au/warranty, or contact us on **1300 306 556**.

DESIGNLINK™

PHONE: 1800 621 117



Licensed by Australian Made Campaign Limited to use the Australian Made Logo.



Verified by an independent conformity assessment body to meet the environmental, health and social/ethical criteria of the GECA Panel Boards standard



Gyprock plasterboard products are manufactured for life with all CSR products designed to achieve optimal performance when part of a CSR integrated system.