



Gyprock EC08™ Extreme

Gyprock EC08™ Extreme is an Australian made, GECA certified, multi-function plasterboard with the highest level of specifications in the EC08™ range. It has been specifically designed to meet the highest standards across a broad range of performance requirements, but with a focus on superior impact resistance. This low VOC board is manufactured with a layer of fibreglass mesh in addition to a dense, fibre-reinforced core and high grammage face paper, which means EC08 Extreme walls offer extreme resistance to damage of all types and stay looking newer for longer. This can result in a reduction of regular and unplanned maintenance, saving ongoing operational costs to the building.

Recommended Use

- Internal fire rated and wet area wall and ceiling applications
- Commercial or industrial construction where a multi-attribute board with extreme impact resistance is required such as in mental health facilities, sporting facilities, schools and hotels.
- Green building projects requiring a high level of recycled content.
- Commercial applications that have considerations surrounding maintaining high levels of indoor air quality such as schools, hospitals, and aged care facilities.



Product Features



Extreme Impact Resistance

Reduces damage from hard body and soft body impact



Powerful Antifungal Agent

Contains powerful but gentle antifungal agent to enhance mould and mildew resistance properties



Moisture Resistant

Suitable for wet areas and high humidity applications



High Recycled Content

Ideal for green building projects



Acoustic Properties

Improved acoustic performance helps combat sound transmission



Fire Resistant

Can be used as part of a fire-rated system

Gyprock EC08 Extreme Specifications	
Feature	Description
Thickness	13mm
Mass	12.4Kg/m ²
Thermal Resistance	0.05m ² K/W
Moisture Resistance*	Manufactured to meet or exceed the requirements of water-resistant grade plasterboard.
VOC level (as per GBCA limits)	<0.025 mg/m ² /hr
Widths	1200mm
Lengths	3000mm/3600mm
Edge Profiles	Recessed Edge
Paper Colour	Green
Fire Hazard Properties ^Δ	Average Specific Extinction Are (ASEA) ≤3.1m ² /kg Group = 1 Report Reference WRFA 45759
Combustibility [◇]	Plasterboard may be used wherever a non-combustible material is required
Total Recycled Content [°]	21.3%

*In accordance with AS/NZ 2588

^ΔIn accordance with AS ISO 9705 and AS 5637.1

[◇] In accordance with NCC2022 Vol 1 Clause C2D10(6)(a) and NCC2019 Amdt1 Vol Clause C1.9(e)(i).

[°]This plasterboard may require extra processing when recycling due to the presence of glass fibre mesh material



Australian Made and Owned

Licensed by Australian Made Campaign Ltd



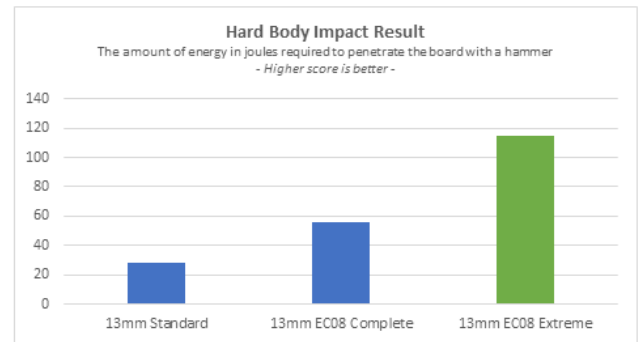
Tested Impact Performance

Hard Body Impact

EC08™ Extreme is the best performer for hard body impact resistance in the EC08 range. In accordance with ASTM C1629/C1629-18, hard body impact resistance levels were determined by a set of comparative hard body tests in which a weighted hammer was used to strike the plasterboard. Test results showed that 114.3 joules of energy is required to damage the EC08™ Extreme plasterboard which is equivalent to a golf ball travelling at over 250km/hr!

Refer to FIGURE 1.

FIGURE 1: Hard Body Impact Result

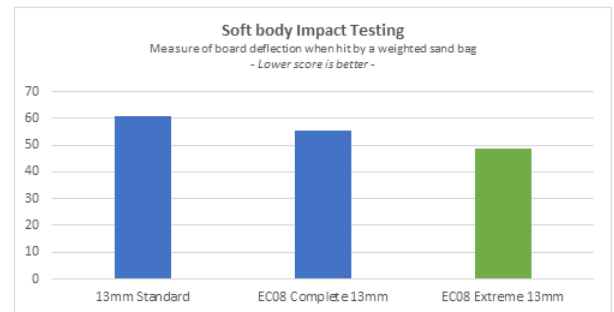


Soft Body Impact

EC08™ Extreme 13mm meets the requirement of NCC2022 Clause S6C10 (c) [NCC2019: C1.8: 5c]. To verify this, a weighted sandbag is swung into the board and the deflection of the board is measured, in accordance with ASTM E 695-03. In comparative testing conducted EC08™ Extreme was the best Gyprock performing plasterboard for soft body impact.

Refer to FIGURE 2.

FIGURE 2: Soft Body Impact Result

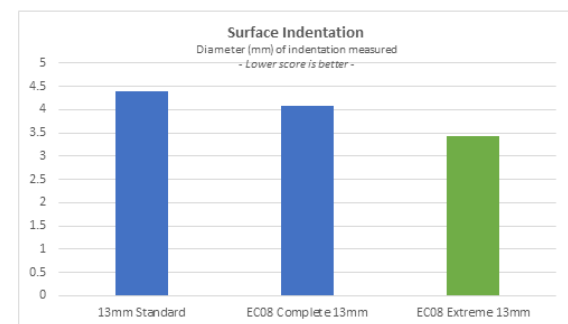


Surface Indentation

EC08™ Extreme 13mm meets the requirements of NCC2022 Clause S6C10(d) [NCC 2019: C1.8:5d] This requires no more than a 5mm diameter impression when tested. EC08 Extreme measured 3.42mm when tested, which was the best result achieved in the Gyprock plasterboard range.

Refer to FIGURE 3.

FIGURE 3: Surface Indentation





Plasterboard Finishing

Jointing and finishing of Gyprock plasterboard interior installations is to be carried out in accordance with **FIGURE 4** and **TABLE 1** in this document, and the following details, so as to provide a smooth surface for decorating. Stopping and external corner beads are to be applied to all edges subject to damage.

The use of Gyprock Wet Area Base Coat or Ultra-Base MR 60 is recommended for all set sheet joints of walls required to be waterproof or water resistant. Joints in non-tiled areas (that are not designated wet areas) may be finished with Gyprock finishing compounds.

A Level 4 Finish is generally the accepted level of finish for residential construction as detailed in AS/NZS2589.1 and is also recommended for commercial construction. This requires a three-coat system, consisting of:

- Tape and tape coat
- Second coat and
- Finish (or topping) coat.

For tiled areas installation should be to a Level 3 Finish.

FIGURE 4: SELECTING A LEVEL OF FINISH

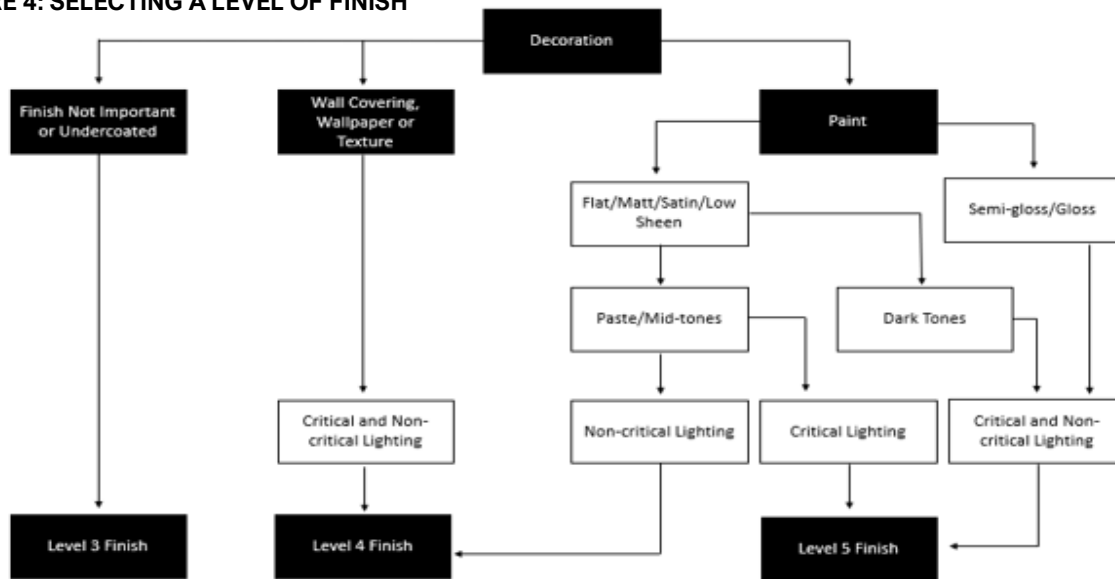


TABLE 1: JOINTING COMPOUND SELECTION – HAND OR MECHANICAL APPLICATION

Tape Coat Any of the following:		Second Coat Any of the following:		Finish Coat Any of the following:	
Product	Recoat Time	Product	Recoat Time	Product	Recoat Time
Base Coat 20*	35 mins	Base Coat 20*	35 mins	Jointmaster	24 hr
Base Coat 45*	60 mins	Base Coat 45*	60 mins	Ultra-Top	24 hr
Base Coat 60*	80mins	Base Coat 60*	80mins	Gold	24 hr
Base Coat 90*	120mins	Base Coat 90*	120mins	Easy-Finish	24 hr
Ultra-Base MR 60*	75 mins	Ultra-Base MR 60*	75 mins	Easy-Flow	24 hr
Easy Base	24 hr	Easy Base	24 hr	Less Mess Multi-Purpose	24 hr
Less Mess Multi-Purpose	24 hr	Less Mess Multi-Purpose	24 hr		
Easy-Flow	12-24 hr	Easy-Flow	12-24 hr		
Wet Area Base Coat		Wet Area Base Coat			

*Setting type compound. Do not use a setting compound over a drying type compound.
For protected exterior applications, use Wet Area Base Coat or Ultra-Base MR 60 for tape and second coat, followed by a Gyprock Finish Coat.



Manufacturing Tolerances

Nominal Thickness	13mm +/- 0.5mm
Nominal Widths	1200mm +/- 3mm
Nominal Lengths	From 3000mm to 3600mm +/- 5mm, typically in 300mm increments
Squareness	Cut ends +/- 3mm in the width of the board

**Subject to reasonable manufacturing variance.

Storage

Protect plasterboard from weather and moisture. Avoid products sagging by storing horizontally, supported on a level platform or full-width support members spaced at max. 600mm centres.

Health and Safety

For further information refer to the Safety Data Sheet for this product which is available from www.gyprock.com.au or contact:

CSR Gyprock
Triniti 3, 39 Delhi Rd, North Ryde NSW 2113
Australia Phone: **131 744**
New Zealand Phone: **0800 277 123**

Installing to Standards

Installing to Standards AS/NZS2589: Gypsum linings – Application and Finishing outlines the procedures for jointing and finishing of Gyprock plasterboard in conjunction with additional details contained in Gyprock Technical Literature.

Resources

For further information on this product please visit www.gyprock.com.au or refer to the Gyprock Red Book. For technical support, contact:

DESIGNLINK™

PHONE: 1800 621 117

Manufactured For Life Warranty

Gyprock products are manufactured for life with all CSR products designed to achieve optimal performance when part of a CSR integrated system. Gyprock continues to lead the market with premium quality products which are the preferred choice of plastering professionals. Gyprock plasterboard products are manufactured to the Australian Standards AS2588 providing confidence in quality of product and support. For details on our product warranty, please log onto www.gyprock.com.au/warranty, or contact us on **1300 306 556**.



Licensed by Australian Made Campaign Limited to use the Australian Made Logo.



Verified by an independent conformity assessment body to meet the environmental, health and social/ethical criteria of the GECA Panel Boards standard.



Gyprock plasterboard products are manufactured for life with all CSR products designed to achieve optimal performance when part of a CSR integrated system.