



Gyprock Supaceil™

Gyprock Supaceil was the first product in Australia manufactured with Optimised Core technology which provides an advanced performance-to-weight ratio, meaning greater breaking strength in a substantially lighter board that continues to exceed the performance requirements of Australian Standard AS/NZS 2588. This improved strength ensures it will stay flatter, even when installed on ceiling joists with 600mm centres. There is also less chance of fixings pulling through the board when extra pressure from above is applied such as heavy ceiling insulation.

Recommended Use

- Non-fire rated ceiling applications
- New residential construction
- Repair and alterations of existing buildings

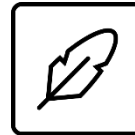


Product Features



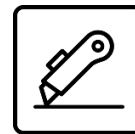
Strong

Robust with high breaking strength for improved handling and performance



Light

Easy to lift for better sheet manoeuvrability and improved flex



Easy Score and Snap

For crisp edges and cleaner cuts



Australian Made and Owned

Licensed by Australian Made Campaign Ltd

Gyprock Supaceil Specifications	
Feature	Description
Thickness	10mm
Widths [□]	0900mm/1200mm/1350mm
Lengths [□]	2400mm/2700mm/3000mm/3600mm 4200mm/4800mm/5400mm/6000mm
Edge Profiles	Recessed Edge
Paper Colour	Ivory
Mass	6.1kg/m ² , 6.2kg/m ² (WA)
Thermal Resistance	0.04-0.05 m ² K/W
Fire Hazard Properties [△]	Group No = 1 SMOGR _{Arc} <100 m ² /s ²
Combustibility [◇]	Plasterboard may be used wherever a non-combustible material is required.
Total Recycled Content	6.2%

[□] Stocked sizes and widths may vary by region, please refer to the relevant product page on gyprock.com.au for details.

[△] In accordance with AS ISO 9705 and AS 5637.1

[◇] In accordance with NCC2022 Vol 1 Clause C2D10(6)(a) and NCC2019 Amdt1 Vol Clause C1.9(e)(i).



Plasterboard Finishing

Jointing and finishing of Gyprock plasterboard interior installations is to be carried out in accordance with **FIGURE 1** and **TABLE 1** in this document, and the following details, so as to provide a smooth surface for decorating. Stopping and external corner beads are to be applied to all edges subject to damage. A Level 4 Finish is generally the accepted level of finish for residential construction as detailed in AS/NZS2589.1 and is also recommended for commercial construction. This requires a three-coat system, consisting of:

- Tape and tape coat
- Second coat and
- Finish (or topping) coat.

FIGURE 1: SELECTING A LEVEL OF FINISH

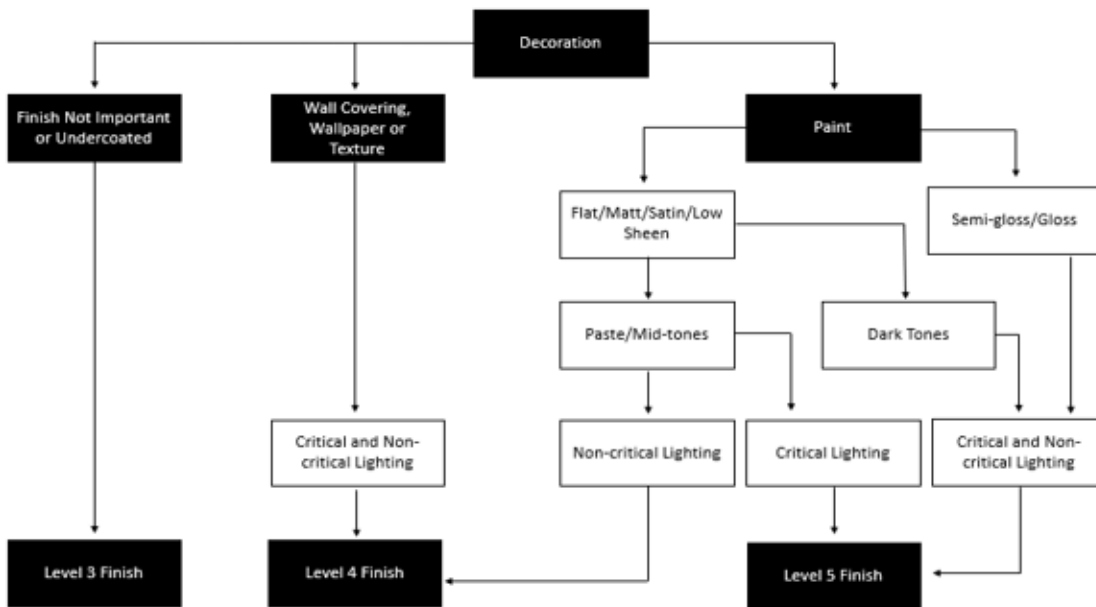


TABLE 1: JOINTING COMPOUND SELECTION – HAND OR MECHANICAL APPLICATION

Tape Coat Any of the following:		Second Coat Any of the following:		Finish Coat Any of the following:	
Product	Recoat Time	Product	Recoat Time	Product	Recoat Time
Base Coat 20*	35 mins	Base Coat 20*	35 mins	Jointmaster	24 hr
Base Coat 45*	60 mins	Base Coat 45*	60 mins	Ultra-Top	24 hr
Base Coat 60*	80mins	Base Coat 60*	80mins	Gold	24 hr
Base Coat 90*	120mins	Base Coat 90*	120mins	Easy-Finish	24 hr
Ultra-Base MR 60*	75 mins	Ultra-Base MR 60*	75 mins	Easy-Flow	24 hr
Easy Base	24 hr	Easy Base	24 hr	Less Mess Multi-Purpose	24 hr
Less Mess Multi-Purpose	24 hr	Less Mess Multi-Purpose	24 hr		
Easy-Flow	12-24 hr	Easy-Flow	12-24 hr		
Wet Area Base Coat		Wet Area Base Coat			

*Setting type compound. Do not use a setting compound over a drying type compound.
For protected exterior applications, use Wet Area Base Coat or Ultra-Base MR 60 for tape and second coat, followed by a Gyprock Finish Coat.



Manufacturing Tolerances

Nominal Thickness	10mm +/- 0.4mm
Nominal Widths	0900mm, 1200mm and 1350mm +/- 3mm
Nominal Lengths	From 2400mm to 6000mm +/- 5mm, typically in 300mm increments
Squareness	Cut ends +/- 3mm in the width of the board

**Subject to reasonable manufacturing tolerance

Storage

Protect plasterboard from weather and moisture. Avoid products sagging by storing horizontally, supported on a level platform or full-width support members spaced at max. 600mm centres.

Health and Safety

For further information refer to the Safety Data Sheet for this product which is available from www.gyprock.com.au or contact:

CSR Gyprock
Trinity 3, 39 Delhi Rd, North Ryde NSW 2113
Australia Phone: **131 744**
New Zealand Phone: **0800 277 123**

Installing to Standards

Installing to Standards AS/NZS2589: Gypsum linings – Application and Finishing outlines the procedures for jointing and finishing of Gyprock plasterboard in conjunction with additional details contained in Gyprock Technical Literature.

Resources

For further information on this product please visit www.gyprock.com.au or refer to the Gyprock Red Book. For technical support, contact:

DESIGNLINK™

PHONE: 1800 621 117

Manufactured For Life Warranty

Gyprock products are manufactured for life with all CSR products designed to achieve optimal performance when part of a CSR integrated system. Gyprock continues to lead the market with premium quality products which are the preferred choice of plastering professionals. Gyprock plasterboard products are manufactured to the Australian Standards AS2588 providing confidence in quality of product and support. For details on our product warranty, please log onto www.gyprock.com.au/warranty, or contact us on **1300 306 556**.



Licensed by Australian Made Campaign Limited to use the Australian Made Logo.



Gyprock plasterboard is manufactured to meet and exceed the requirements of AS/NZS 2588.



Verified by an independent conformity assessment body to meet the environmental, health and social/ethical criteria of the GECA Panel Boards standard.



Gyprock plasterboard products are manufactured for life with all CSR products designed to achieve optimal performance when part of a CSR integrated system.