



Gyprock HD

Gyprock HD is manufactured with a high-density core and a heavy-duty liner paper to provide enhanced acoustic properties and resistance to soft and hard body impact. While Gyprock Plus provides everyday durability, HD is the perfect all round premium 10mm plasterboard that has enhanced resistance to dents, scuffs, and scrapes from things such as furniture and school bags and is up to 75% more impact resistant compared to Gyprock Plus 10mm.



Recommended Use

- Non-fire rated wall applications in high traffic areas of the home such as corridors, hallways and rumpus rooms.
- Rooms requiring a reduction in sound transmission from one area to another such as children's bedrooms, playrooms and living areas.
- New residential construction
- Ceiling applications of multi-storey homes where noise reduction is required between floor levels.

Product Features



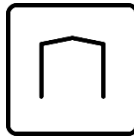
High Impact Resistance

High density core and heavy-duty liner paper to provide up to 75% more impact resistance than Gyprock Plus 10mm.



Enhanced Acoustic Performance

Denser core provides reduced sound transmission between adjoining spaces.



Ultimate Versatility

Can be used for residential walls and ceilings as well as Gyprock Party Wall and other Gyprock systems.



Made with Recycled Materials

Developed and manufactured with 10% recycled content.



Australian Made and Owned

Licensed by Australian Made Campaign Ltd

Gyprock HD Specifications	
Feature	Description
Thickness	10mm
Widths [□]	1200mm/1350mm
Lengths [□]	3600mm/4200mm/4800mm
Edge Profiles	Recessed Edge
Paper Colour	Ivory
Mass	8.5kg/m ²
Thermal Resistance	0.04-0.05 m ² K/W
Fire Hazard Properties [△]	Group No = 1 SMOGRARC <100 m ² /s ²
Combustibility [◇]	Plasterboard may be used wherever a non-combustible material is required.
Total Recycled Content	10%

[□] Stocked sizes and widths may vary by region, please refer to the relevant product page on gyprock.com.au for details.

[△] In accordance with AS ISO 9705 and AS 5637.1

[◇] In accordance with NCC2022 Vol 1 Clause C2D10(6)(a) and NCC2019 Amdt1 Vol Clause C1.9(e)(i).



Plasterboard Finishing

Jointing and finishing of Gyprock plasterboard interior installations is to be carried out in accordance with **FIGURE 1** and **TABLE 1** in this document, and the following details, so as to provide a smooth surface for decorating. Stopping and external corner beads are to be applied to all edges subject to damage. A Level 4 Finish is generally the accepted level of finish for residential construction as detailed in AS/NZS2589.1 and is also recommended for commercial construction. This requires a three-coat system, consisting of:

- Tape and tape coat
- Second coat and
- Finish (or topping) coat.

FIGURE 1: SELECTING A LEVEL OF FINISH

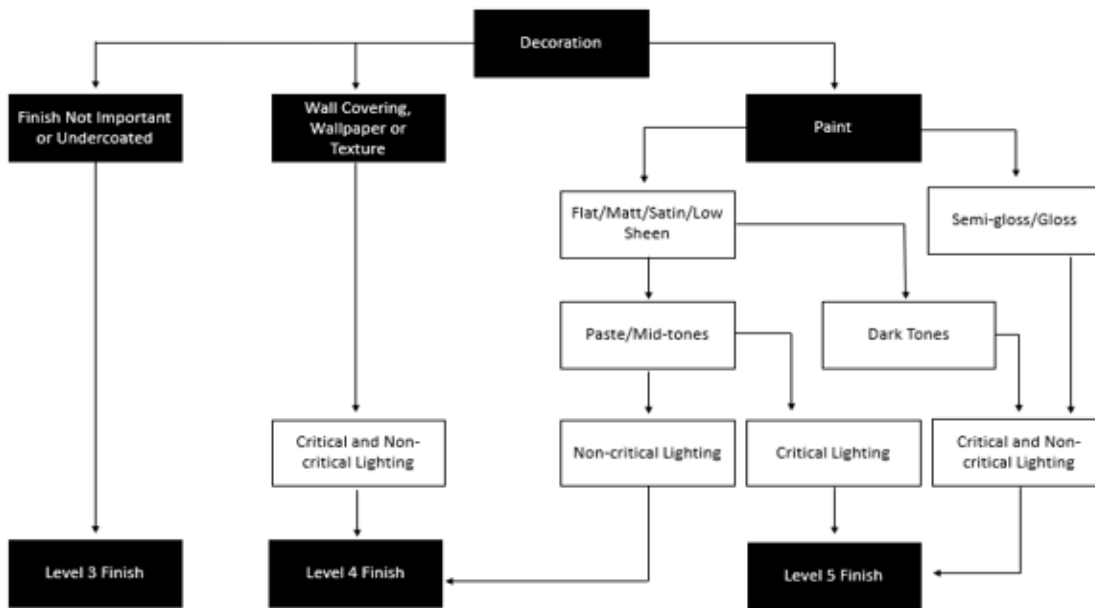


TABLE 1: JOINTING COMPOUND SELECTION – HAND OR MECHANICAL APPLICATION

Tape Coat Any of the following:		Second Coat Any of the following:		Finish Coat Any of the following:	
Product	Recoat Time	Product	Recoat Time	Product	Recoat Time
Base Coat 20*	35 mins	Base Coat 20*	35 mins	Jointmaster	24 hr
Base Coat 45*	60 mins	Base Coat 45*	60 mins	Ultra-Top	24 hr
Base Coat 60*	80mins	Base Coat 60*	80mins	Gold	24 hr
Base Coat 90*	120mins	Base Coat 90*	120mins	Easy-Finish	24 hr
Ultra-Base MR 60*	75 mins	Ultra-Base MR 60*	75 mins	Easy-Flow	24 hr
Easy Base	24 hr	Easy Base	24 hr	Less Mess Multi-Purpose	24 hr
Less Mess Multi-Purpose	24 hr	Less Mess Multi-Purpose	24 hr		
Easy-Flow	12-24 hr	Easy-Flow	12-24 hr		
Wet Area Base Coat		Wet Area Base Coat			

*Setting type compound. Do not use a setting compound over a drying type compound.
For protected exterior applications, use Wet Area Base Coat or Ultra-Base MR 60 for tape and second coat, followed by a Gyprock Finish Coat.



Manufacturing Tolerances

Nominal Thickness	10mm +/- 0.4mm
Nominal Widths	1200mm and 1350mm +/- 3mm
Nominal Lengths	From 3600mm to 4800mm +/- 5mm, typically in 600mm increments
Squareness	Cut ends +/- 3mm in the width of the board

**Subject to reasonable manufacturing variance

Storage

Protect plasterboard from weather and moisture. Avoid products sagging by storing horizontally, supported on a level platform or full-width support members spaced at max. 600mm centres.

Health and Safety

For further information refer to the Safety Data Sheet for this product which is available from www.gyprock.com.au or contact:

CSR Gyprock
Triniti 3, 39 Delhi Rd, North Ryde NSW 2113
Australia Phone: **131 744**
New Zealand Phone: **0800 277 123**

Installing to Standards

Installing to Standards AS/NZS2589: Gypsum linings – Application and Finishing outlines the procedures for jointing and finishing of Gyprock plasterboard in conjunction with additional details contained in Gyprock Technical Literature.

Resources

For further information on this product please visit www.gyprock.com.au or refer to the Gyprock Red Book. For technical support, contact:

DESIGNLINK™

PHONE: 1800 621 117

Manufactured For Life Warranty

Gyprock products are manufactured for life with all CSR products designed to achieve optimal performance when part of a CSR integrated system. Gyprock continues to lead the market with premium quality products which are the preferred choice of plastering professionals. Gyprock plasterboard products are manufactured to the Australian Standards AS2588 providing confidence in quality of product and support. For details on our product warranty, please log onto www.gyprock.com.au/warranty, or contact us on **1300 306 556**.



Licensed by Australian Made Campaign Limited to use the Australian Made Logo.



Verified by an independent conformity assessment body to meet the environmental, health and social/ethical criteria of the GECA Panel Boards standard.



Gyprock plasterboard products are manufactured for life with all CSR products designed to achieve optimal performance when part of a CSR integrated system.