

Gyprock Ultra-Base MR 60

Gyprock Ultra-Base MR 60 is a premium setting type base coat formulation with a working life of approximately 60 minutes from application. It is for the jointing of Gyprock plasterboard in all areas of the home. Its lightweight formulation is ultra-easy to apply, and it offers enhanced moisture and mould resistance, making it ideal for use with Gyprock Aquachek™ in wet areas and protected exterior applications such as alfresco areas. Joints may be finished with any Gyprock topping or all-purpose compound and sanded smooth prior to decoration. The product is tinted light blue for easy identification.

Recommended Use

Gyprock Ultra-Base MR 60 is ideal for jointing Gyprock Aquachek and EC08 range plasterboards in wet areas and throughout the homes of asthma and allergy sufferers. It is used for the tape coat and second coat in a three-coat plasterboard jointing system for residential and commercial walls and ceilings. To achieve the ultimate joint finish, it is recommended Ultra-Base MR 60 is used in conjunction with Gyprock Topping or All-Purpose compounds.

Important

- Do not use Ultra-Base MR 60 as a finish coat.
- Allow Ultra-Base MR 60 to set completely in between coat applications.
- Do not apply Ultra-Base MR 60 over a drying type compound.
- If jointing in severe drying conditions, it is recommended to mix only small quantities of compound.
- Always use clean containers and equipment.
- Thoroughly clean tools after use.
- Ensure surfaces are free from dust or dirt.

Storage

Store plaster in a dry place. Do not place bags directly on concrete floors or damp ground. Long term storage may affect the plaster setting time and finish quality.



Product Features



First and Second Coats

Suitable for the tape coat and second coat



Powerful Antifungal Agent

Contains powerful but gentle antifungal agent to enhance mould and mildew resistance properties



Moisture Resistant

Suitable for use in wet areas



Hand and Machine Tool Applied

Hand or machine tool applied.



Australian Made and Owned

Licensed by Australian Made Campaign Ltd

Gyprock Ultra-Base MR 60 Specifications	
Feature	Description
Colour	Light blue tint
Coverage	13kg/100m ²
Packaging	16kg non resealable bag
Shelf Life	12 months from date of manufacture
Specific Gravity	1.4 – 1.6
VOC Content (as specified by GBCA)	2g/L as VOC content per material
Product Manufacture	Gyprock Ultra-Base MR 60 is manufactured by CSR Gyprock in Australia and made to stringent product specifications.



Plasterboard Finishing

Jointing and finishing of Gyprock plasterboard interior installations is to be carried out in accordance with **FIGURE 1** and **TABLE 1** in this document, and the following details, so as to provide a smooth surface for decorating. Stopping and external corner beads are to be applied to all edges subject to damage. A Level 4 Finish is generally the accepted level of finish for residential construction as detailed in AS/NZS2589.1 and is also recommended for commercial construction. This requires a three-coat system, consisting of:

- Tape and tape coat
- Second coat and
- Finish (or topping) coat.

For tiled areas, installation should be to a Level 3 Finish.

For areas subject to direct exposure of water such as shower, baths and basins, it is still recommended to apply a waterproof membrane over Ultra-Base MR 60. Wet Area Base Coat is the superior jointing product when jointing Fibre Cement sheets or AFS Logicwall.

FIGURE 1: SELECTING A LEVEL OF FINISH

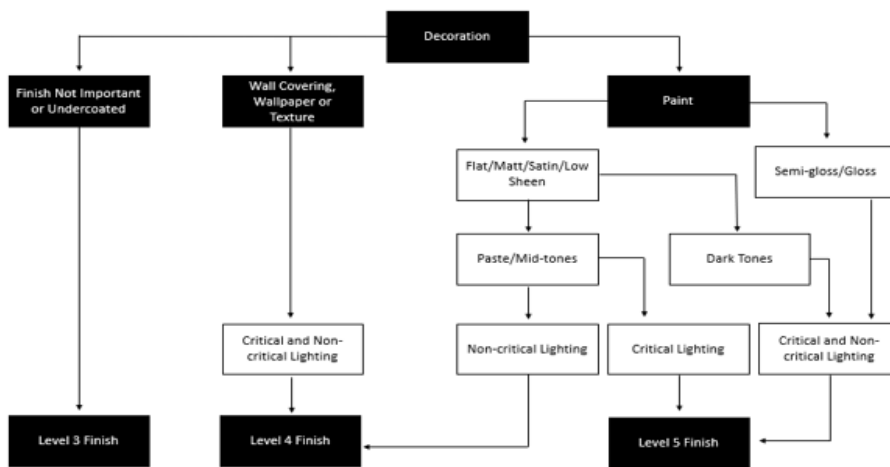


TABLE 1: JOINTING COMPOUND SELECTION – HAND OR MECHANICAL

Tape Coat		Second Coat		Finish Coat	
Any of the following:		Any of the following:		Any of the following:	
Product	Recoat Time	Product	Recoat Time	Product	Recoat Time
Base Coat 20*	35 mins	Base Coat 20*	35 mins	Jointmaster	24 hr
Base Coat 45*	60 mins	Base Coat 45*	60 mins	Ultra-Top	24 hr
Base Coat 60*	80mins	Base Coat 60*	80mins	Gold	24 hr
Base Coat 90*	120mins	Base Coat 90*	120mins	Easy-Finish	24 hr
Ultra-Base MR 60*	75 mins	Ultra-Base MR 60*	75 mins	Easy-Flow	24 hr
Easy Base	24 hr	Easy Base	24 hr	Less Mess Multi-Purpose	24 hr
Less Mess Multi-Purpose	24 hr	Less Mess Multi-Purpose	24 hr		
Easy-Flow	24 hr	Easy-Flow	24 hr		
Wet Area Base Coat	12-24 hr	Wet Area Base Coat	12-24 hr		

*Setting type compound. Do not use a setting compound over a drying type compound.
For protected exterior applications, use Wet Area Base Coat or Ultra-Base MR 60 for tape and second coat, followed by a Gyprock Finish Coat.

Hand Application

First coat

1. Fill recess even and fully with compound
2. Bed in Gyprock Perforated Paper tape centrally over the joint and cover lightly with compound. Apply at least 1mm thickness of compound under the tape.
3. Bed tapes to butt joints and internal corner angles. Apply at least 1mm thickness of compound under the tape.
4. Cover all metal corner beads and fastener heads.
5. Allow compound to set and harden for at least 75 minutes before recoating.

Second Coat

1. Apply a second coat of Gyprock Ultra-Base MR 60 to
 - (a) Recessed edge joints to a width of about 180mm
 - (b) Butt joints to a width of about 400mm
 - (c) Metal corner beads to a width of about 200mm
 - (d) Fastener heads
2. Allow compound to set and harden before recoating. Ideally, the joint should be fully dry before the final coat is applied.

Finishing Coat

Apply a thin coat of any Gyprock topping or all-purpose compound. Allow approximately 24 hours for it to dry.

Installing to Standards

Installing to Standards AS/NZS2589: Gypsum linings – Application and Finishing outlines the procedures for jointing and finishing of Gyprock plasterboard in conjunction with additional details contained in Gyprock Technical Literature.

Health and Safety

Refer to the Safety Data Sheet for this product which is available from www.gyprock.com.au or contact:

CSR Gyprock
Triniti 3, 39 Delhi Rd, North Ryde NSW 2113
Australia Phone: **131 744**
New Zealand Phone: **0800 277 123**

Resources

For further information on this product please visit www.gyprock.com.au or refer to the Gyprock Red Book. For technical support, contact:

DESIGNLINK™

PHONE: 1800 621 117

Manufactured For Life Warranty

Gyprock products are manufactured for life with all CSR products designed to achieve optimal performance when part of a CSR integrated system. Gyprock continues to lead the market with premium quality products which are the preferred choice of plastering professionals. Gyprock plasterboard products are manufactured to the Australian Standards AS2588 providing confidence in quality of product and support. For details on our product warranty, please log onto www.gyprock.com.au/warranty, or contact us on **1300 306 556**.



Licensed by Australian
Made Campaign Limited
to use the Australian
Made Logo.



Verified by an independent
conformity assessment body to
meet the environmental, health
and social/ethical criteria of the
GECA Panel Boards standard



Gyprock plasterboard products are
manufactured for life with all CSR
products designed to achieve
optimal performance when part of a
CSR integrated system.