



## Gyprock Easy-Base™

Easy-Base™ is a drying type jointing compound used for the first and second coat in a three-coat jointing system. Available as a convenient semi-lightweight pre-mixed compound, it is ideal for sites with limited water access while its drying time makes it suitable for use in hot and dry conditions where other compounds might dry before setting.

## Recommended Use

Gyprock Easy-Base provides superior tape adhesion and joint strength. It is used for the tape coat and second coat in a three-coat plasterboard jointing system for residential and commercial walls and ceilings. To achieve the ultimate joint finish, it is recommended Easy-Base is used in conjunction with Gyprock Topping or All-Purpose compounds.

## Important

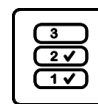
- Do not use Easy-Base as a finish coat.
- Allow Easy-Base to dry completely in between coat applications.
- Add water sparingly to achieve the desired consistency.
- If liquid has separated from compound, remix with fresh tools.
- Do not apply a setting compound over Easy-Base.
- Easy-Base should not be used when the interior lining temperature is below 8°C
- Always use clean containers and equipment.
- Thoroughly clean tools after use.
- Ensure surfaces are free from dust or dirt.

## Storage

Store buckets of compound in a dry environment out of direct sunlight. Remove lid and stir prior to use. Unused product should be stored by resealing the original bucket. Remix prior to use. Discard if drying has commenced.



## Product Features



### First and Second Coats

Suitable for the tape coat and second coat



### Superior Tape Adhesion

Resulting in superior joint strength



### Extreme Conditions

Suitable for use in hot and dry conditions



### Versatile Application

Hand or machine tool applied



### Australian Made and Owned

Licensed by Australian Made Campaign Ltd

## Gyprock Easy-Base Specifications

Feature	Description
Colour	Off White
Coverage	24kg/100m <sup>2</sup>
Packaging	17kg re-sealable pail
Shelf Life	12 months from date of manufacture
Specific Gravity	1.45
VOC Content (as specified by GBCA)	1g/L as VOC content per material
Product Manufacture	Gyprock Easy-Base is manufactured by CSR Gyprock in Australia and made to stringent product specifications.

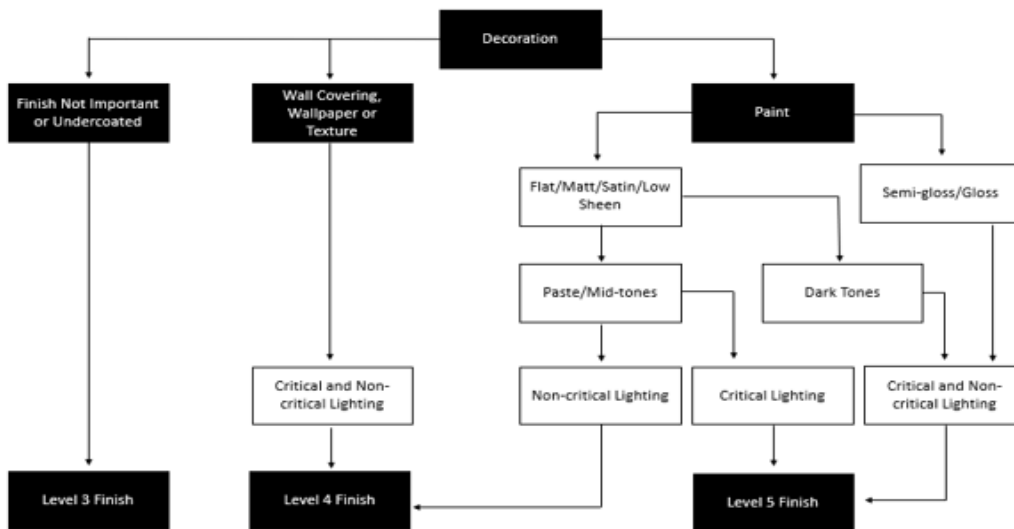


## Plasterboard Finishing

Jointing and finishing of Gyprock plasterboard interior installations is to be carried out in accordance with **FIGURE 1** and **TABLE 1** in this document, and the following details, so as to provide a smooth surface for decorating. Stopping and external corner beads are to be applied to all edges subject to damage. A Level 4 Finish is generally the accepted level of finish for residential construction as detailed in AS/NZS2589.1 and is also recommended for commercial construction. This requires a three-coat system, consisting of:

- Tape and tape coat
- Second coat and
- Finish (or topping) coat.

**FIGURE 1: SELECTING A LEVEL OF FINISH**



**TABLE 1: JOINTING COMPOUND SELECTION – HAND OR MECHANICAL**

Tape Coat Any of the following:		Second Coat Any of the following:		Finish Coat Any of the following:	
Product	Recoat Time	Product	Recoat Time	Product	Recoat Time
Base Coat 20*	35 mins	Base Coat 20*	35 mins	Jointmaster	24 hr
Base Coat 45*	60 mins	Base Coat 45*	60 mins	Ultra-Top	24 hr
Base Coat 60*	80mins	Base Coat 60*	80mins	Gold	24 hr
Base Coat 90*	120mins	Base Coat 90*	120mins	Easy-Finish	24 hr
Ultra-Base MR 60*	75 mins	Ultra-Base MR 60*	75 mins	Easy-Flow	24 hr
Easy Base	24 hr	Easy Base	24 hr	Less Mess Multi-Purpose	24 hr
Less Mess Multi-Purpose	24 hr	Less Mess Multi-Purpose	24 hr		
Easy- Flow	24 hr	Easy-Flow	24 hr		
Wet Area Base Coat	12-24 hr	Wet Area Base Coat	12-24 hr		

\*Setting type compound. Do not use a setting compound over a drying type compound.  
For protected exterior applications, use Wet Area Base Coat or Ultra-Base MR 60 for tape and second coat, followed by a Gyprock Finish Coat.



## Hand Application

### Bedding Coat

1. Fill recess evenly and fully with compound.
2. Bed in Gyprock Perforated Paper Tape centrally over the joint and cover lightly with compound. Ensure at least 1mm thickness of compound is under the tape.
3. Bed tapes to butt joints and internal corner angles.
4. Cover all metal beads and fastener heads.
5. Allow compound to dry and harden for approximately 24 hours (depending upon atmospheric conditions).

### Second Coat

1. Apply a second coat of Easy-Base to:
  - a) Recessed edge joints to a width of about 180mm.
  - b) Butt joints to a width of about 400mm.
  - c) Metal corner beads to a width of about 200mm.
  - d) Fastener heads.
2. Allow adequate time before recoating.

### Finishing Coat

For all joints except where tiles are to be applied, apply a finish coat of any Gyprock topping or all-purpose compound and sand smooth prior to decoration.

## Machine Application

Apply a first coat and bed in paper tape, ensuring the recess is evenly covered. Apply a second coat of Easy-Base using a 200mm finishing box. Apply a topping coat (if applicable) of any Gyprock topping or all-purpose compound using a 250mm or 300mm finishing box, allowing adequate drying time between each coat.

## Installing to Standards

Installing to Standards AS/NZS2589: Gypsum linings – Application and Finishing outlines the procedures for jointing and finishing of Gyprock plasterboard in conjunction with additional details contained in Gyprock Technical Literature.

## Health and Safety

Refer to the Safety Data Sheet for this product which is available from [www.gyprock.com.au](http://www.gyprock.com.au) or contact:

CSR Gyprock  
Trinity 3, 39 Delhi Rd, North Ryde NSW 2113  
Australia Phone: **131 744**  
New Zealand Phone: **0800 277 123**

## Resources

For further information on this product please visit [www.gyprock.com.au](http://www.gyprock.com.au) or refer to the Gyprock Red Book Residential and Commercial Installation Guides. For technical support, contact:

**DESIGNLINK™**

PHONE: 1800 621 117

## Manufactured For Life Warranty

Gyprock products are manufactured for life with all CSR products designed to achieve optimal performance when part of a CSR integrated system. Gyprock continues to lead the market with premium quality products which are the preferred choice of plastering professionals. Gyprock plasterboard products are manufactured to the Australian Standards AS2588 providing confidence in quality of product and support. For details on our product warranty, please log onto [www.gyprock.com.au/warranty](http://www.gyprock.com.au/warranty), or contact us on **1300 306 556**.



Licensed by Australian Made Campaign Limited to use the Australian Made Logo.



Verified by an independent conformity assessment body to meet the environmental, health and social/ethical criteria of the GECA Panel Boards standard



Gyprock plasterboard products are manufactured for life with all CSR products designed to achieve optimal performance when part of a CSR integrated system.