



## Gyprock Less Mess™ Topping Compound

Gyprock Less Mess Topping Compound is a semi lightweight pre-mixed formulation designed for easier application and sanding. Less Mess Topping Compound has over 80%\* less airborne dust generated when sanding compared to the standard DIY jointing compound.

### Recommended Use

Gyprock Less Mess Topping Compound can be used as the topping coat in a three-coat plasterboard or fibre cement jointing system. The Less Mess technology and 24 hour drying time make Gyprock Less Mess Topping Compound ideal for home DIY jobs and plasterboard repairs. Gyprock Less Mess Topping Compound is suitable for internal wall and ceiling applications, or as a topping compound over Wet Area Base Coat in areas subject to moisture or high humidity.

### Important

- Do not use Less Mess Topping Compound for bedding tape or as a second coat.
- In wet area applications, topping compounds should not be used on areas to be tiled.
- If liquid has separated from compound, remix with clean tools.
- Ensure surfaces are clean from dust or dirt.
- Before use, remix to a smooth creamy consistency.
- Always use clean tools.
- Replace lid when not in use.

### Storage

Store buckets of compound in a dry environment out of direct sunlight. Remove lid and stir prior to use. Unused product should be stored by resealing the original bucket. Remix prior to use. Discard if drying has commenced.

\*As tested by Safe Environments Pty Ltd, November 2019



### Product Features



#### DIY

Professional quality in convenient pack sizes.



#### Less Prep

Less preparation



#### Easy Sanding

Less effort sanding



#### Easy Clean Up

Less Mess to Clean Up

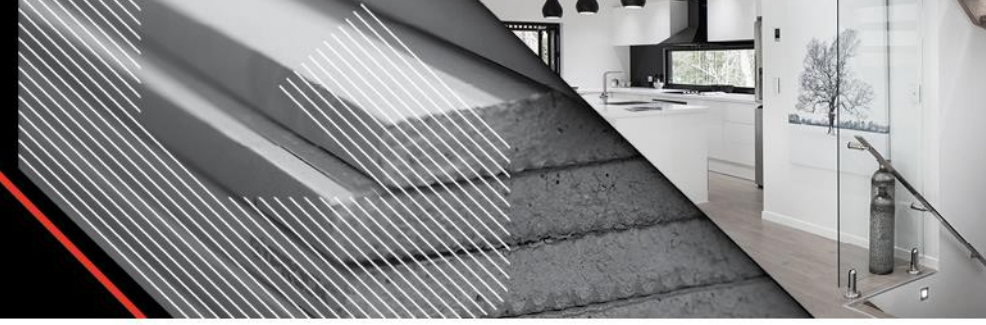


#### Australian Made and Owned

Licensed by Australian Made Campaign Ltd

### Gyprock Less Mess Topping Compound Specifications

Feature	Description
Colour	Off White
Packaging	2.25kg Re-sealable pail
Shelf Life	12 months from date of manufacture
Specific Gravity	1.2 - 1.5
VOC Content (as specified by GBCA)	3g/L as VOC content per material
Product Manufacture	Gyprock Less Mess Topping Compound is manufactured by CSR Gyprock in Australia and made to stringent product specifications.

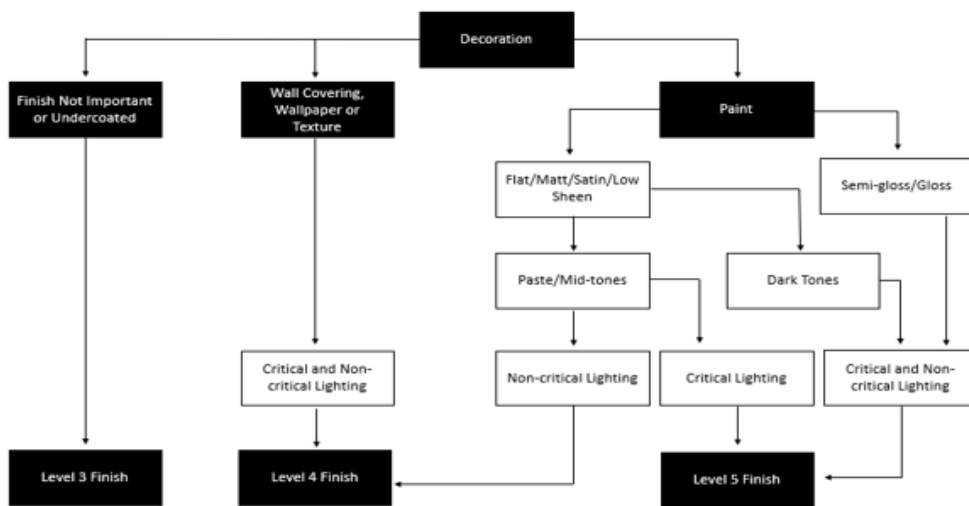


## Plasterboard Finishing

Jointing and finishing of Gyprock plasterboard interior installations is to be carried out in accordance with **FIGURE 1** and **TABLE 1** in this document, and the following details, so as to provide a smooth surface for decorating. Stopping and external corner beads are to be applied to all edges subject to damage. A Level 4 Finish is generally the accepted level of finish for residential construction as detailed in AS/NZS2589.1 and is also recommended for commercial construction. This requires a three-coat system, consisting of:

- Tape and tape coat
- Second coat and
- Finish (or topping) coat.

**FIGURE 1: SELECTING A LEVEL OF FINISH**



**TABLE 1: JOINTING COMPOUND SELECTION – HAND OR MECHANICAL**

Tape Coat Any of the following:		Second Coat Any of the following:		Finish Coat Any of the following:	
Product	Recoat Time	Product	Recoat Time	Product	Recoat Time
Base Coat 20*	35 mins	Base Coat 20*	35 mins	Jointmaster	24 hr
Base Coat 45*	60 mins	Base Coat 45*	60 mins	Ultra-Top	24 hr
Base Coat 60*	80mins	Base Coat 60*	80mins	Gold	24 hr
Base Coat 90*	120mins	Base Coat 90*	120mins	Easy-Finish	24 hr
Ultra-Base MR 60*	75 mins	Ultra-Base MR 60*	75 mins	Easy-Flow	24 hr
Easy Base	24 hr	Easy Base	24 hr	Less Mess Multi-Purpose	24 hr
Less Mess Multi-Purpose	24 hr	Less Mess Multi-Purpose	24 hr		
Easy-Flow	24 hr	Easy-Flow	24 hr		
Wet Area Base Coat	12-24 hr	Wet Area Base Coat	12-24 hr		

\*Setting type compound. Do not use a setting compound over a drying type compound.  
For protected exterior applications, use Wet Area Base Coat or Ultra-Base MR 60 for tape and second coat, followed by a Gyprock Finish Coat.

## Application

1. Using a broadknife or trowel, apply a thin top coat of Topping Compound wide enough to conceal the previously coated joint – approximately 250mm. Soften the outer edges of the newly trowelled compound with a damp brush before feathering the edges with the trowel.
2. Cover previously coated fastener heads, overlapping about 25mm.

## Sanding

Allow compound to dry and harden for at least 24 hours, then sand to a smooth finish using 150 grit sandpaper or 150-220 grit mesh.

## Painting

Apply all paints in accordance with paint manufacturer's recommendations.

## Installing to Standards

Installing to Standards AS/NZS2589: Gypsum linings – Application and Finishing outlines the procedures for jointing and finishing of Gyprock plasterboard in conjunction with additional details contained in Gyprock Technical Literature.

## Health and Safety

Refer to the Safety Data Sheet for this product which is available from [www.gyprock.com.au](http://www.gyprock.com.au) or contact:  
CSR Gyprock  
Trinity 3, 39 Delhi Rd, North Ryde NSW 2113  
Australia Phone: **131 744**  
New Zealand Phone: **0800 277 123**

## Resources

For further information on this product please visit [www.gyprock.com.au](http://www.gyprock.com.au) or refer to the Gyprock Red Book. For technical support, contact:

**DESIGNLINK™**

PHONE: 1800 621 117

## Manufactured For Life Warranty

Gyprock products are manufactured for life with all CSR products designed to achieve optimal performance when part of a CSR integrated system. Gyprock continues to lead the market with premium quality products which are the preferred choice of plastering professionals. Gyprock plasterboard products are manufactured to the Australian Standards AS2588 providing confidence in quality of product and support. For details on our product warranty, please log onto [www.gyprock.com.au/warranty](http://www.gyprock.com.au/warranty), or contact us on **1300 306 556**.



Licensed by Australian Made Campaign Limited to use the Australian Made Logo.



Verified by an independent conformity assessment body to meet the environmental, health and social/ethical criteria of the GECA Panel Boards standard



Gyprock plasterboard products are manufactured for life with all CSR products designed to achieve optimal performance when part of a CSR integrated system.