



Everything else is just plasterboard

Repairing Gyprock®

HOW TO REPAIR HOLES, DENTS AND SCRAPES IN PLASTERBOARD

The best method to use to repair plasterboard depends on the extent of the damage. This guide will look at three levels of repair:

- Minor dents and scrapes
- Small holes up to 25mm
- Larger holes

For more detailed information, refer to the Gyprock DIY videos and Gyprock Residential Installation Guide, available at gyprock.com.au

Make sure you use appropriate safety equipment including gloves, a dust mask, safety glasses and hearing protection.

SHOPPING LIST

- Gyprock Easy Tape
- Gyprock Rapid Patch compound
- Small container and clean water for mixing
- 100mm broadknife
- Sanding float and 150 grit sandpaper or sanding block
- For larger holes, a piece of Gyprock plasterboard larger than the hole in the same thickness as the existing plasterboard

Note: These items are available in the Gyprock Rapid Repair Kit which comes complete with easy to follow instructions and is ideal for holes in 10mm plasterboard up to 150mm x 150mm.

For larger holes you will also need:

- Pencil
- Utility knife
- Keyhole or plasterboard saw

REPAIRING MINOR DENTS AND SCRAPES

1. For minor dents and scrapes where the core of the plasterboard has not been substantially damaged, remove any protruding paint and paper remnants and sand around the damaged area.
2. Mix Rapid Patch following the instructions on the pack to give an easy to use, creamy consistency. It has a working life of around 20 minutes after mixing, so only mix as much as you need and discard the mix once it starts to go hard.
3. Completely fill the area with Rapid Patch compound using your broadknife.
4. For shallow dents, allow to dry for at least 20 minutes before lightly sanding ready for painting.
5. For deeper dents, a second coat may be necessary and longer drying time may be needed. Apply a second coat, covering a larger area than the first. Once dry, lightly sand ready for painting.

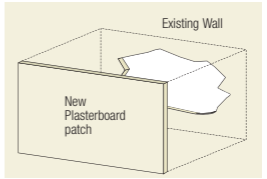
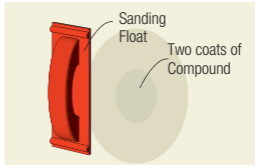
REPAIRING SMALL HOLES UP TO 25mm IN DIAMETER

1. Clean any remnants and sand around the damaged area.
2. Mix Rapid Patch following the instructions on the pack to give an easy to use, creamy consistency. It has a working life of around 20 minutes after mixing, so only mix as much as you need and discard the mix once it starts to go hard.



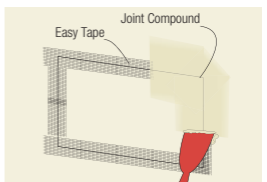
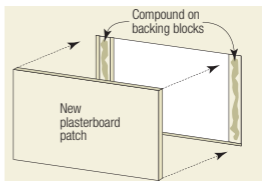
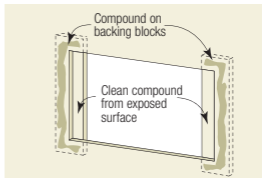
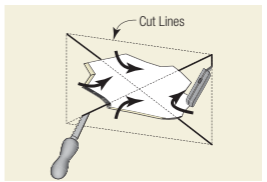


3. Fill the hole with compound using a 100mm broadknife. Allow to dry for at least 40 minutes.
4. Sand back if necessary then apply 1 or 2 strips of Easy Tape to cover the damage.
5. Apply a coat of Rapid Patch over the tape, overlapping the surrounding plasterboard by at least 25mm on all sides.
6. Allow to dry for at least 20 minutes.
7. Sand lightly and apply another coat of compound 25mm wider than the previous one.
8. Allow to dry for at least 20 minutes.
9. Lightly sand, ready for painting.



REPAIRING LARGER HOLES

1. Cut a rectangular piece of Gyprock plasterboard, slightly larger than the hole.
2. Place the plasterboard over the hole and draw around it.
3. Mark diagonal lines on the wall.
4. Taking care not to puncture plumbing or cut electrical wiring, cut along the diagonal marks with a keyhole or plasterboard saw.
5. Score through the plasterboard liner paper along the remaining marked lines with a utility knife and snap the plasterboard in towards the wall cavity.
6. Use your utility knife to trim through the back paper and dispose of the damaged parts.
7. Cut two plasterboard backing blocks about 100mm wide and 100mm taller than the height of the hole to allow for the patching compound.
8. Using a small amount of compound, stick the two blocks to the inside of the wall to form a frame for the patching piece.
9. Ensure that the cut edges and adhesive surfaces are clean and leave to dry for at least 1 hour.
10. Apply compound to the front face of the backing blocks and gently push the new plasterboard into place, ensuring the face is level with the existing wall. Leave to dry for at least 1 hour.
11. Lightly sand any painted surfaces and apply Easy Tape over the joints between the original plasterboard and the new patch.
12. Apply a coat of compound over the tape overlapping the surrounding plasterboard by at least 25mm on all sides. Allow to dry for at least 20 minutes.
13. Sand lightly and apply another coat of compound 25mm wider than the previous one. Allow to dry for at least 20 minutes.
14. Lightly sand ready for painting.



Find more DIY guides at www.gyprock.com.au/DIY and instructional videos at gyprock.com.au/videos

