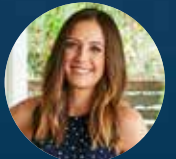


home *style*

style & performance

LIFE MOMENTS DO NOT
COME MUCH BIGGER THAN
DESIGNING & CREATING
YOUR OWN HOME

28 PAGES OF
INSPIRATIONAL
INTERIORS



Two-time contestant on
Channel Nine's *The Block* and a
die-hard renovator, Dani Wales
gives us her design insights

FROM MAKING AN ENTRANCE TO CREATING A MODERN OASIS USING
GYPROCK CORNICE AND PLASTERBOARD, WE HAVE IT COVERED.

+ FRESH IDEAS FOR
BEDROOMS, LIVING, KITCHEN & DINING,
ALFRESCO, HOME OFFICE, BATHROOM & MORE...

GYPROCK[®]
Everything else is just plasterboard





GYPROCK[®]
Everything else is just plasterboard

contents

- 4** **STYLE & PERFORMANCE**
A guide to choosing the right Gyprock products.
- 6** **A TIMELY ENTRANCE** Bring a contemporary entrance to life with coastal flair.
- 8** **SCANDI SLEEP SPACE**
Simple Nordic style will evolve with your child.
- 10** **HAMPTONS HANGOUT**
Create Hamptons-style harmony in the heart of your home.
- 12** **GROWING SPACE** Their own space – a rumpus room that's all grown up.
- 14** **THE ZEN ZONE**
A cosy nook that's all class – and noise-insulated.
- 16** **SARTORIAL SANCTUARY** Give your room a sartorial touch with pastel flourishes.
- 18** **MODERN OASIS**
A Palm Springs vibe comes down to a rich blend of contrasts.

Welcome to the third edition of *HomeStyle* magazine, a practical and inspirational magazine to help plan your new home or renovation.

As a two-time contestant on Channel Nine's *The Block*, editor of home, design and lifestyle blog *Basic Habitat*, and a die-hard renovator, I've been exposed to all kinds of design styles, materials and workmanship.

I'm a firm believer in insisting on quality and not cutting corners. From building materials through to the last throw cushion, every element of the building, renovation and styling process is just as important as the next.

Creating a visually pleasing space plays a huge part in how comfortable you and your family will feel in your home, so it's important to get it right from the start.

Taking control of your project and understanding which Gyprock products should be used will smooth the process. Oh, and your builder will absolutely love you for it! If the overall performance benefits of selecting different Gyprock products are not enough, the choices in finishing products such as cornice, and the architectural features such as bulkheads and niches you can create, can add a whole new dimension to your home.

Whether you are contemplating a complete new build or renovating, this edition of *HomeStyle* provides creative inspiration and practical information to help you get the most out of your space. In many ways, the devil is in the detail, and the versatility of Gyprock products will help you to create a beautiful space that's great to live in.

In my recently completed home renovation, the advances in Gyprock plasterboard technology helped me create a feeling of space and tranquility throughout my home.

In my bathroom I used Gyprock's moisture-resistant plasterboard and painted it, rather than using tiles in the areas outside my shower. It was a great way to highlight the architectural angles from the staircase above the bath and create a really dramatic feature.

I also used Gyprock plasterboard to construct a pelmet to house the track for sheer linen drapes. Details like these make your home stand out from the crowd.

There has never been a better time to throw out the rule book and mix it up! Get the bones right and then let your creativity take the lead.

Good luck with your project and enjoy this edition of *HomeStyle*.

Dani Wales

20 **SHERBERT SURPRISE**

Soft pastels are brought to life with bright detail.

22 **STYLISH NEW YORKER**

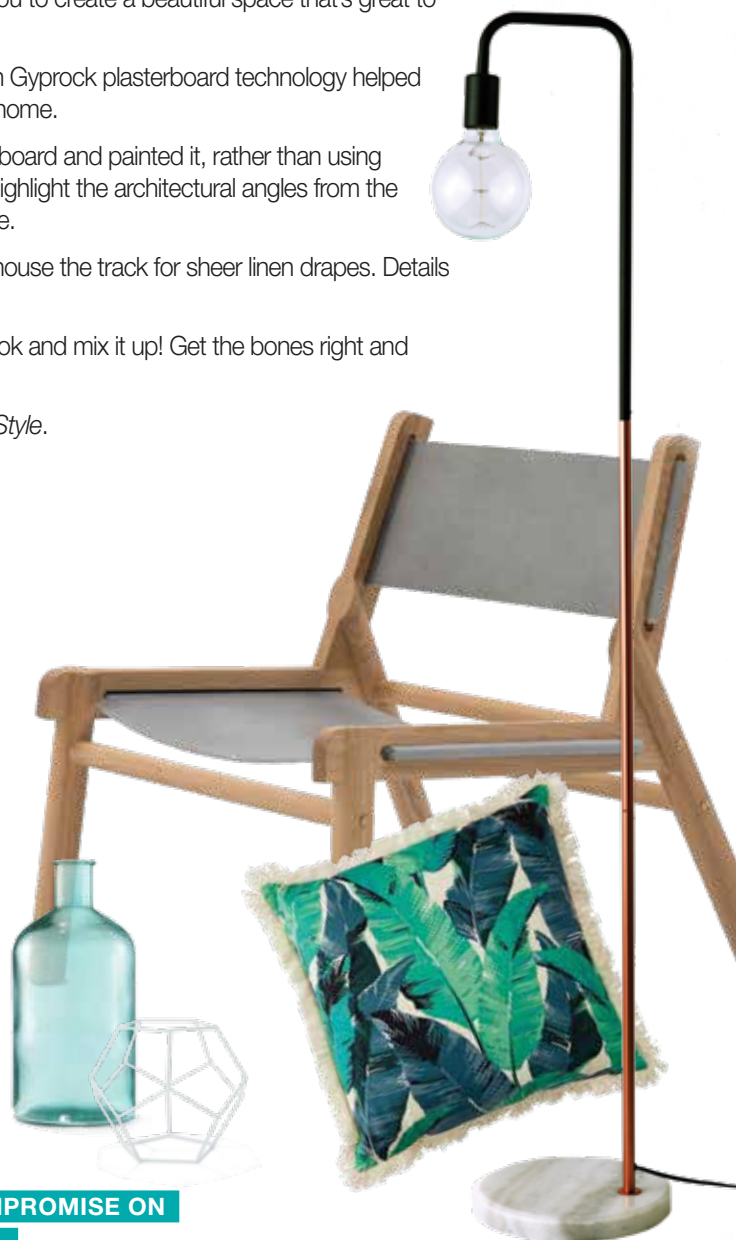
Bring Manhattan glamour to a small space with floor detail.

24 **ALFRESCO GROVE**

Create an outdoor entrainment space that flows.

26 **THE GYPROCK RANGE** All about our Gyprock products featured inside.

THE BIGGEST THING TO KEEP IN MIND IS TO NEVER COMPROMISE ON GETTING THE STYLE AND PERFORMANCE YOU DESERVE.



style & performance

LIFE MOMENTS DON'T COME MUCH BIGGER THAN DESIGNING AND CREATING YOUR OWN HOME. BUILDING OR RENOVATING A HOUSE IS NO SIMPLE ENDEAVOUR, BUT THE REWARDS SPEAK FOR THEMSELVES; A BEAUTIFUL HOME CUSTOMISED TO YOUR INDIVIDUAL NEEDS.

Whether you are building a new home, giving a dated interior a facelift or extending and adapting to serve new purposes, Gyprock® – a household name since 1947 – offers a range of quality products that will make a real difference to your enjoyment of your new home environment.

While walls, ceilings and cornice are installed towards the final stages of building, it's during the initial planning phase that you need to consider the finer details of your design and how you want your home to function.

THINK ABOUT YOUR PARTICULAR PERFORMANCE REQUIREMENTS OF THE VARIOUS AREAS OF THE HOME AND WORK WITH YOUR BUILDER TO SELECT SOLUTIONS TO HELP CONTROL NOISE, REDUCE MAINTENANCE AND PROTECT YOUR FAMILY FROM POTENTIAL AIRBORNE NASTIES.

Noise can really disrupt your enjoyment of a home so make sure that sound from areas like home theatres doesn't disturb you in rooms where you want to relax and enjoy peace and quiet such as studies and bedrooms. **Gyprock Soundchek™** has been specially designed to reduce sound transfer through walls and ceilings to help make your home a more peaceful place to live.

To keep your home looking good and reduce maintenance you want to avoid the nicks and scuffs from daily living. **Gyprock Superchek™** features a dense core with high recycled content which provides added durability as well as improved noise control, making it ideal for high traffic areas, like hallways and rumpus rooms.

In bathrooms and laundries **Gyprock Aquachek™** resists moisture and forms the perfect base for tiling or paint. **Gyprock® Sensitive** provides the same moisture resistance with the added benefit of a mould inhibitor that also makes it great for bedrooms or throughout the homes of asthma and allergy sufferers.

THE FINISHING TOUCH

Gyprock's great range of cornices gives you the freedom to create your own style from classic to contemporary. You can add wow in your entrance and entertaining areas with one of the more dramatic cornices paired with a simpler complementary profile through the rest of your home to create a cohesive look.

ONCE YOU'VE MADE YOUR PLAN MAKE SURE YOU DISCUSS IT WITH YOUR BUILDERS SO THEY CAN CONCENTRATE ON BUILDING YOUR IDEAL HOME WITH NO SURPRISES.

Breathe easy

Gyprock Sensitive is a revolutionary hypoallergenic plasterboard designed to ensure cleaner air for your family.

Made with a powerful and safe antifungal agent, it resists the growth of mould and mildew, helping to reduce airborne spores that can irritate sensitive airways.

Its moisture-resistant formulation makes it ideal for use in bathrooms and laundries as well as bedrooms which are the areas most susceptible to mould in a home.

Gyprock Sensitive is the first and only residential plasterboard to be approved by the National Asthma Council Australia Sensitive Choice® program and is suitable for use throughout the homes of asthma and allergy sufferers.



it's all in the planning

WHILE YOU ARE BUILDING OR RENOVATING IS ABSOLUTELY THE MOST COST-EFFECTIVE TIME TO ENSURE YOU GET THE BEST FROM YOUR HOME. SO IT IS REALLY WORTH SPENDING THE TIME TO SIT DOWN WITH THE LAYOUT OF THE ROOMS AND THINK ABOUT HOW EACH PART OF YOUR HOME WILL BE USED.

Nice dividing wall, maybe a bulk head over dining?

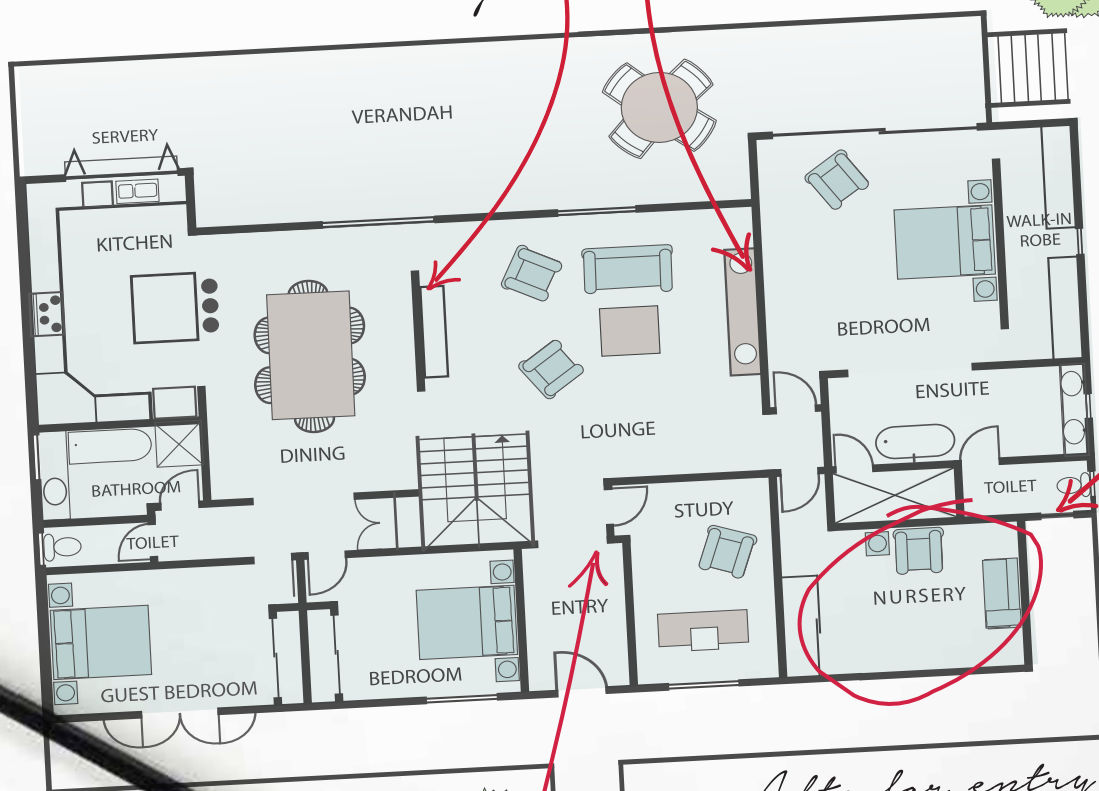
Possible noise from TV - better use Soundchek!

Sensitive for nursery - and bathroom?

Area for all other areas

Alto for entry & lounge/dining

Superchek to reduce knocks and noise in entry & stairs



home *style*

a timely entrance

YOUR ENTRANCE IS A SNEAK PEAK INTO THE STYLE OF YOUR HOME SO SMART MULTI-PURPOSE FURNISHINGS AND STYLING ARE ESSENTIAL. A MODERN CORNICE SUCH AS GYROCK ALTO™ WILL CREATE A GREAT FIRST IMPRESSION WHILE A HARD-WEARING PLASTERBOARD SUCH AS GYROCK SUPERCHEK™, WILL HELP REDUCE THE NUMBER OF KNOCKS AND BUMPS IN THIS HIGH-TRAFFIC SPACE.



This hallway has a fresh, relaxed beach style with bold yet functional focal pieces. The rustic bench and vintage pastel bicycle are a perfect match for the wide floorboards.



IN THE DETAIL IDEAL FOR CONTEMPORARY, OPEN-PLAN DESIGNS, **ALTO** CORNICE THROWS A CRISP SHADOWLINE TO OFFSET THE LIGHT-FILLED SPACE.



PUNCTUATE A CLEAN WALL WITH SCATTERED DOT HANGERS. EMBRACE COASTAL STYLE AND HANG SUNHATS AND BEACH BAGS.

Good design is always of its time - contemporary style offers a fresh take with a nod to the classic.

IN THE DETAIL PLANTS BRING THE OUTDOORS INSIDE AND PURIFY THE AIR.



Building or extending for a growing brood? Gyprock's premium plasterboard, Superchek ticks all the boxes, combining high impact resistance, high-level acoustics and high recycled content.

Perfect for high-traffic areas in the home, Superchek is doubly resistant to dents and scrapes from kicks and schoolbags. Superchek will also be your sanity check, with better sound absorption delivering 15 per cent less noise transfer, even between floors. And its high recycled content has the Good Environmental Choice Australia tick of approval. Who said no ball games in the hallway?

Clean lines – practical Superchek plasterboard is made to stay in shape.

Vintage Ladies Classic Plus bicycle large in aqua \$249.99
Reid Cycles; Marle Collection tuck rug 100% wool from \$306/m² (custom-made) **Armadillo & Co** www.armadillo-co.com; Ivy Muse Quay plant stand in white \$170. ABOVE: Royal pot in gold rim with white dip \$140 **Design Twins** www.designtwins.com



Compact and modern, **Aria™** cornice features a slimline profile with a subtle centre crease for a geometric edge and provides a simpler match for **Alto™**.

A timeless design will allow the furniture and accessories to grow with your little person.

For a playful Scandinavian interior, black and white is a great base. Cushions, blankets and toys are easily swapped out as your child's favourite colour changes.

Wood is a key feature in Scandi design, creating a sense of warmth. Here, the neutral timber in the table, stools and bike balance out the strong black and white and pops of colour. Mix up and layer natural, organic textures such as linen, cotton and hemp for luxurious comfort.

Let the light in – no curtains! Keep all light fixtures simple, modern and minimalistic.

Introduce geometry through graphic prints, black-and-white typographic artworks, fabrics, lighting and, something always on-trend, toys.

In Nordic design, the key pieces of furniture have clean and simple lines in a neutral colour.

MIX UP WALL ART WITH TYPOGRAPHIC POSTERS, REMOVEABLE DECALS OR A LIGHT BOX – AN ADORABLE WAY TO BRING A TOUCH OF LIGHT INTO YOUR LITTLE ONE'S BEDROOM.



IN THE DETAIL AN OVERSIZED DOONA HANGS NICELY AND IS LESS LIKELY TO BE KICKED OFF DURING A COLD NIGHT.

Oscar bed single \$549, and mattress \$299 **Incy Interiors** www.incyinteriors.com.au; Adventure art print \$99.95 **Blacklist** www.blackliststore.com.au; OYOY Circle rug \$145 **Top 3 by Design** www.top3.com.au; Birch stool tall by Homely Creatures \$149.95 **Kido Store** www.kidostore.com.au; Hex table white \$99.95, Animal Buddy Lionel Lion \$39.95, Young Warrior quilt cover set double \$169.95, Mix It Up separates Geo black flat & fitted sheet, \$49.95 each, Mini Santona light marle grey cushion \$39.95, Attitude Rock Star cushion \$39.95, Rhinoceros night light \$39.95. (ABOVE Dog shown) **Adairs** www.adairs.com.au



scandi
sleep
space

DECORATING YOUR CHILD'S BEDROOM IS THE PERFECT EXCUSE TO LET YOUR INNER CHILD OUT TO PLAY. THE CLEAN LINES AND UNOBTRUSIVE APPEARANCE OF A GYPROCK CORNICE SUCH AS ARIA CREATES THE PERFECT BACKDROP TO ADD FUN GEOMETRIC WALL DECALS, POPS OF COLOUR, AND QUIRKY, PLAYFUL ACCESSORIES.

hamptons hangout



CREATE THE PERFECT CALMING BACKDROP FOR FAMILY MEMORIES BY INTRODUCING A PALETTE OF SOFT PASTEL HUES WITH NEUTRAL FURNISHINGS AND FLOOR COVERINGS INTO YOUR KITCHEN AND DINING SPACE. PARED-BACK STYLE WITH BOLD COLOUR ACCENTS AND A MULTIDIMENSIONAL CORNICE WITH STRONG, CLEAN LINES WILL ENSURE YOU ACHIEVE A HARMONIOUS FEELING.

THIS UNIQUE DINING SPACE WAS CREATED BY COORDINATING A MINIMALISTIC GLASS-TOP DINING TABLE WITH ELEGANT TIMBER CHAIRS INSPIRED BY THE COASTAL CALM OF THE HAMPTONS.

An open kitchen is the heart of a home, and the room where you and your family will spend the most time together over the years. Create a mix of spaces where you can entertain and gather, settings which invite people to sit and share, and cozy lounges where you can all hang out.

This chic take on the Hamptons beach-house style blends light-coloured organic materials on a bright, off-white base, weighted with gorgeous dark floorboards and picked up in the print. Art Deco accessories add levity and character without overwhelming the style.

IN THE DETAIL THE MULTIDIMENSIONAL **TRIO** CORNICE ADDS A CONTEMPORARY TWIST TO CLASSIC DESIGN AND ECHOES THE ART DECO MOOD.



Don't forget a focal point for the table, such as a beautiful vase of fig branches.

If you love a piece of artwork make it a centrepiece to inspire the colour palette for the entire room.

Retro Style 2-slice toaster pastel green \$179 **Smeg** www.smeg.com.au; Avalon 2 artwork 160cm x 120cm \$799 **United Artworks** www.unitedartworks.net; Nest Natural rug 1.7m x 2.4m \$770 **Armadillo & Co** www.armadillo-co.com; Potter upholstered dining chair in light-grey & ash \$299, and Potter timber dining chair in Ash \$299 **Life Interiors** www.lifeinteriors.com.au; KitchenAid espresso machine POA **KitchenAid** www.kitchenaid.com.au; Douglas bowls, porcelain pitcher and beakers **Jardan** www.jardan.com.au

FOR A CONTAINED SPACE WHERE KIDS CAN ENTERTAIN THEIR FRIENDS IN 'GROWN-UP' PRIVACY, THE DECOR NEEDS TO BE FLEXIBLE AND MULTIFUNCTIONAL.

KIDS' ENTERTAINMENT ZONES AND RETREATS ARE BECOMING MORE AND MORE POPULAR IN TODAY'S HOMES. PRACTICAL FURNISHINGS AND BUILT-IN STORAGE IS A MUST! ADD TEXTURE AND SOFTEN THE SPACE WITH RUGS, SOFT FURNISHINGS AND FRESH FLOWERS. COMPLETE THE LOOK WITH A MODERN, SIMPLE AND STRONG CORNICE SUCH AS GYROCK DUO.

IN THE DETAIL THE GEOMETRIC PROFILE OF THE **DUO** CORNICE MAKES A SHARP, SOPHISTICATED STATEMENT AND ADDS SYMMETRY. IT'S ALSO THE PERFECT PARTNER TO **TRIO** IN MORE FORMAL AREAS.

Boxing in beams with Gyprock plasterboard can create a subtle separation between areas of your home.

Create a contained space where your kids can grow from tweens to teens, with a modern take on the traditional rumpus room. Keep it simple and don't clutter the space with furniture – this is all about room to move and explore, developing their personalities in their own time. Floorboards make a fabulous organic surface for all kinds of endeavours and can be easily cleaned at the end of the day. If you don't have built-in storage, think mounted shelving and cubbies.

Invest in a few key pieces such as these amazing bean bags to add some 'design' to an otherwise very kiddy space.

EASILY UPDATE A KIDS' ZONE WITH MORE GROWN-UP PIECES OF FURNITURE.



Light denim bean bag 100 x 150cm \$599, and vintage Kilim bean bag 100 x 150cm \$1,200 **Koskela** www.koskela.com.au; Sierra weave rug in pumice 1.7m x 2.4m \$1,070 **Armadillo & Co** www.armadillo-co.com; Lionel chair **Jardan** www.jardan.com.au

growing space





NO-ONE CAN DENY FEELING CALM AND RELAXED WHEN THEIR SURROUNDINGS ARE ORGANISED. YOUR HOME OFFICE IS NO EXCEPTION.

the zen zone

YOUR HOME OFFICE SHOULD BE CREATIVE, INSPIRING AND, MOST IMPORTANTLY, PRACTICAL. INTRODUCE A LITTLE FLAIR AND WOW-FACTOR USING STATEMENT WALLPAPER AND A GYPROCK CORNICE SUCH AS CONCERTO™. COMBINING SMOOTH CURVES WITH DISTINCTIVE LINES WILL GIVE YOU THE BASE FOR A CALM AND MOTIVATING HOME-OFFICE SPACE.



Marble is a hot luxury item, even a small marble side table makes an impact.

IN THE DETAIL CONCERTO'S SMOOTH CURVES, DISTINCTIVE LINES AND SHARP CENTRE STEP ADD CHARACTER TO THE ROOM. IN THE EVENING LIGHT, THIS CORNICE THROWS A DRAMATIC SHADOWING EFFECT, ORGANICALLY CHANGING THE MOOD. MATCH IT WITH **SYMPHONY™** FOR HARMONY THROUGHOUT YOUR HOME.

If you work from home, you'll need a functional area to complete your tasks. It's a great idea to have a separate zone for this, but if space is tight, consider a feature corner that doubles as a relaxed chill-out space.

To delineate your nook, adorn the walls with your favourite photos and art. Here, the furniture is kept minimalist and neutral, drawing the eye to the textural bamboo-print wallpaper.


Space is maximised with a mounted shelf, while the graphic print accents in zingy mint green add a modern touch. In this space, contrasting elements such as the powerful monochrome wallpaper and clean white walls, the smooth furniture lines and the bold, textured rug pattern each have individual impact, combining to create a harmonious effect.

IN THE DETAIL GYPROCK SOUNDCEK™ IS IDEAL TO HELP YOU KEEP YOUR CALM BY REDUCING NOISE TRANSMISSION FROM OTHER AREAS SUCH AS HOME THEATRES OR ENTERTAINMENT ROOMS.

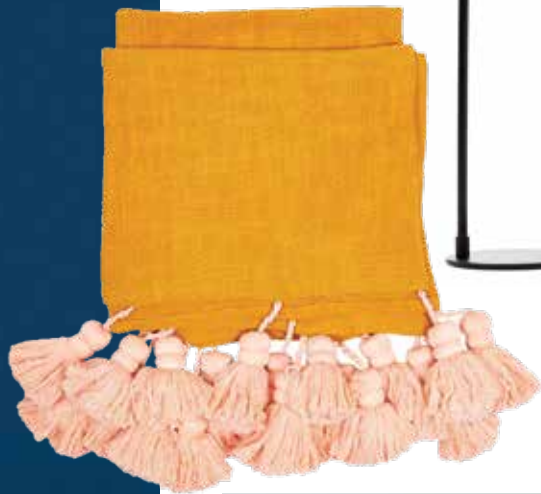


Botanic Garden wallpaper designed by Helene Blanche \$149/10m roll **Eurowalls** www.eurowalls.com.au; Tiffany side table, marble with black base \$319, Milton trestle work desk 120cm \$899, Gus* Modern truss armchair in cabana husk \$1,260 **Life Interiors** www.lifeinteriors.com.au; Souk wool rug 152cm x 244cm \$699 **West Elm** www.westelm.com.au; Jungle Leaf dusky pink 40cm \$145 **Bonnie & Neil** www.bonnieandneil.com.au; Elton table lamp in mint \$89.95 **Beacon Lighting** www.beaconlighting.com.au; Sergio dining chair in ash & light grey \$369 **Life Interiors** www.lifeinteriors.com.au

sartorial sanctuary



YOUR BEDROOM SHOULD BE YOUR SANCTUARY... THE PLACE YOU ESCAPE TO AT THE END OF A LONG BUSY DAY. DARKER, MOODIER HUES, PARED BACK WITH NEUTRAL TEXTILES AND SPLASHES OF COLOUR, WILL EVOKE A FEELING OF RELAXATION. INCLUDING A CORNICE WITH MULTIDIMENSIONAL CURVES SUCH AS GYROCK SYMPHONY™ WILL ADD A SENSE OF SERENITY AND FLUIDITY.



Naturally, the room you spend the most private time in should reflect your needs, as well as your personal style. If you're an avid reader, for example, a cosy, well-lit armchair is a must.

Your bedroom doesn't have to match the rest of your house – it is usually not somewhere guests visit – so you can be more edgy and experimental with your design. Just remember to keep some elements of calm as it's where you need to wind down and catch some 'zees'.

Flowers add a final flourish true to mid-century style.

KEEP YOUR BEDDING SIMPLE AND ACCENT YOUR ROOM WITH BRIGHT, COLOURFUL THROWS AND PILLOWS.



IN THE DETAIL THE ELEGANT **SYMPHONY** CORNICE OFFERS SOFT CURVES AND A STRONG SHADOWLINE, THE PERFECT FINISH TO ACCENTUATE SOFT PASTELS COLOUR-BLOCKED WITH DARKER SHADES AND BRIGHT ACCESSORIES. HERE, THE DUSKY PINK MEETS DEEP NAVY, MUSTARD, WHITE AND COPPER FOR A UNIQUE COLOUR PALETTE. SYMPHONY'S SLIM PROFILE WILL ALSO TRANSFORM A LOWER CEILING WITH ITS ARTISTIC EDGE.

ROSE QUARTZ
PANTONE 13-1520

Rose Quartz is Pantone's colour of the year.

Pink Peacock bedhead queen \$599 **Milly & Eugene** www.millyandeugene.com.au; Pippin side table copper \$169.95, European Collection stonewash white quilt cover \$229.95, European Collection stonewash coal Euro pillowcase \$39.95 each, European Collection stonewash pink pillowcase pair \$49.95, European Collection stonewash flat & fitted sheet in pink/coal, vintage washed linen cushion in blush \$59.95 **Adairs** www.adairs.com.au; Kip & Co. tassel bed throw mustard \$249 **Life Interiors** www.lifeinteriors.com.au; Stoic 1 light table lamp in marble/clear \$179, Monlue cylinder table lamp in copper/black \$189 **Beacon Lighting** www.beaconlighting.com.au; Barnaby Lane folding stool in black \$289, Barnaby Lane Smith chair in black \$899, Crown pot in sorbet/gold, medium \$190 **Design Twins** www.designtwins.com.au; Banksia wreath mustard cushion 50cm \$155 **Bonnie & Neil** www.bonnieandneil.com.au

modern oasis



A PALETTE OF BLUES AND GREENS CREATES FLOW BETWEEN INDOORS AND OUT.

THE SECRET TO ACHIEVING THE PERFECT LAID-BACK LIVING ROOM IS IN THE DETAIL, SO CAREFULLY BALANCING INDIVIDUAL ELEMENTS IS ESSENTIAL. MIXING TIMBERS AND FABRICS WITH SOFT NATURAL HUES AND BRIGHT ACCENTS, PARED BACK WITH THE SUBTLE LINES OF GYROCK TEMPO™ CORNICE WILL ENSURE A CASUAL, RELAXED AND MODERN LIVING SPACE.

Have a hero – this room is all about the fireplace. The artwork, oversized rug and coffee table lead you there without competing. The round coffee table and ottoman add interest to the otherwise rectangular shapes.



IN THE DETAIL TEMPO'S MULTIPLE SHADOW LINES AND CLEAN SURFACES OFFER A CRISP DESIGNER EDGE AND ENHANCE THE SENSE OF SPACE.

Palm Springs style is synonymous with laid-back elegance. Modern accessories sit comfortably alongside vintage, so don't be afraid to mix and match.

Think sleek, smooth marble and glass finishes, stone teamed with timber or shiny lacquered furniture, soft furnishings, from velvet curtains to silk lampshades, and structured upholstery with cushions in luscious, soft linen.

The Artwork Stylist *Palms* portrait \$1,500, Marble Oia round coffee table with oak base 90cm **Life Interiors** www.lifeinteriors.com.au; Big Major blue cushion \$155, hand-painted stripe blue & pink cushion 50cm \$145, Palette fluoro pink cushion 50cm \$145 **Bonnie & Neil** www.bonnieandneil.com.au; Missoni Wallara cylinder black & white \$619 **Top 3 by Design** www.top3.com.au; Coal Coast rug 240cm x 300cm \$5,490 **Designer Rugs** www.designerrugs.com.au, Pinstripe pot in electric blue medium \$190 **Design Twins** www.designtwins.com





sherbet surprise

WHEN IT COMES TO NURSERY STYLING, BALANCE IS CRUCIAL. WHILE IT'S IMPORTANT TO CREATE A SOOTHING ENVIRONMENT FOR YOUR BABY TO REST, IT ALSO NEEDS TO BE A LITTLE PLAYFUL AND CREATIVE. THINK A SOFT, NEUTRAL PALETTE WITH ACCENTS OF COLOUR IN THE DECOR AND SOFT FURNISHINGS. A NIFTY TRICK TO BRING IN A POP OF COLOUR IS TO PAINT THE CORNICE IN A SOFT PASTEL HUE.

BOLD ACCENTS AND ORGANIC ACCESSORIES ANCHOR ETHEREAL PASTELS.

Soft pastels are on-trend across the globe. These refreshing pinks, mints, lemons and baby blues are peaceful and calming for a newborn's room.

Avoid a too-sweet look by mixing pastels with neutral tones and natural materials. Light timber adds harmonious depth. Leather and fur add texture and warmth. A sheepskin rug is a great way to break up the space and provide a soft place to roll and crawl.



The large woven leather chair is softened with a textured fur cushion – comfortable for feeding and reading books. This is a must in a nursery.



Building your nursery with **Gyprock® Sensitive** is a great way to protect your child. This special-purpose plasterboard is manufactured with a powerful but gentle antifungal agent to resist mould growth. Classified as low in volatile organic compounds, which can irritate delicate airways, Gyprock Sensitive is ideal for a child's bedroom or throughout the home of asthma and allergy sufferers.

IN THE DETAIL THE SMART AND SUBTLE PRESTO CORNICE PROVIDES A FRESH FINISH.

Teeny cot in dove grey \$799 **Incy Interiors** www.incyinteriors.com.au; Kids Fruit Loop pear cushion multi \$19.95, Ivory Sheepskin \$118.95 **Adairs** www.adairs.com.au; *Beautiful Dreamer* silver foil art print \$74.95 **Blacklist** www.blackliststore.com.au; Tee Pee \$149.95 **Klea & Ko** www.kleako.com.au; Twine weave rug in charcoal/limestone 1.7m x 2.4m \$970 **Armadillo & Co** www.armadillo-co.com; Yummy Doughnut \$27.95 **Adairs Kids** www.adairs.com.au; Lapin And Me Baby Lapin lamp in vintage pink \$179, The Family Love Tree Big kid's stool in apple green \$89 **Kido Store** www.kidostore.com; Barnaby Lane Tanner chair \$749, Ilka Elora Swan \$94.95 **Design Twins** www.designtwins.com.au

home style



IN THE DETAIL BUILT FOR WET AREAS, GYPROCK AQUACHEK™ PLASTERBOARD IS TREATED TO MAKE IT MOISTURE-RESISTANT WITHOUT COMPROMISING INTEGRITY. AQUACHEK PROVIDES AN EXCELLENT, STABLE SUBSTRATE FOR CERAMIC TILES.

HERE, THE WALL AND CEILING JUNCTIONS ARE SQUARE-SET, BUTTED TOGETHER AND SET NEATLY TO FORM A SQUARE FINISH THAT CAN EASILY BE TILED UP TO OR PAINTED.

Keep lines clean and minimalist, but don't forget some timber to soften your look.

To create a bathroom that evokes modern Manhattan style, go bold with your floor or walls. Here, hexagon tiles create an unmistakable Art Deco statement on the floors. The walls are white, with a marble-look nib wall behind the deep free-standing bath, cleverly hiding the shower space. The marble also adds a focal point, but doesn't compete with the tiles – this is all about the floor.

A recessed mirrored cabinet adds hidden storage and reflects light.

Laminex180fx Carrara Marble from \$98.90/m2 (excluding GST & fabrication & installation costs) Laminex www.laminex.com.au; Vermont Grey Hey cement/encaustic tile \$139/m2 Teranova www.teranova.com.au; Herringbone matte black mosaic \$79/m2 Teranova www.teranova.com.au; Omvivo Venice 700 counter basin \$799.70, Kado Arc 1730 free-standing bath \$1,779.99, Milli Axon ext basin mixer black outlet \$784.99, Milli Axon floor bath mixer black outlet \$1,700 Reece www.reece.com.au; Monarch bath mat \$59, Monarch bath towel 70cm x 140cm \$79 Ninnho www.ninnho.com.au; Doris stool in blush \$129 Life Interiors www.lifeinteriors.com.au; ON STOOL: Cotton wash cloth \$11.90, black clay soap \$11.90 Salus Body www.salusbody.com.au; ON BATH NICHE: Geranium & juniper berry body cleanser \$35/500mL, organic lavender & black salt body soak \$24.95/120g, eucalyptus & rosemary purifying body scrub, \$32/250mL, patchouli & rose ultra-moisture body oil \$32/200mL Salus Body www.salusbody.com.au; ON MIRROR NICHE: Ylang Ylang soy candle \$42 Salus Body www.salusbody.com.au; ON VANITY TOP: Tuberose & grapefruit hydrating hand wash \$35/500mL Salus Body www.salusbody.com.au



stylish new yorker

WHEN IT COMES TO BATHROOMS, KEEP IT SIMPLE BY SQUARE-SETTING THE CEILING AND ALLOWING THE FITTINGS AND FIXTURES TO TAKE THE LEAD. INCLUDING SMART, PRACTICAL STORAGE SOLUTIONS SUCH AS NICHEs AND BUILT-IN MIRRORED CABINETS WILL HELP CREATE A SENSE OF SPACE AND ADD VISUAL INTEREST, AS WILL LARGE-SCALE MIRRORS.



ON DISPLAY, BATHROOM ACCESSORIES AND PRODUCTS BECOME STRIKING OBJETS D'ART.

WHEN STYLING AN OUTDOOR ROOM OR ALFRESCO SPACE, THINK GREENERY AND SOFT FURNISHINGS. INCLUDING LOTS OF POTTED PLANTS IS A GREAT WAY TO BRING IN SOME LIFE AND SOFTEN A SPACE WITH TOO MANY HARD SURFACES. ALSO CONSIDER CUSHIONS AND THROWS FEATURING PLANT PRINTS.



WOOD, RATTAN, HEMP AND JUTE ARE ALL MATERIALS INSPIRED BY NATURE. CHOOSE THESE MATERIALS IN YOUR FURNITURE FOR A COMFORTABLE OASIS TO RELAX, BOTH INDOORS AND OUT

alfresco grove

Expand your home and take advantage of the Australian climate and lifestyle by converting your outdoor space into a contemporary undercover patio, perfect for entertaining. The shadowline between the walls and ceilings contributes to the feeling that the ceiling is floating above you.

Using one of Gyprock's moisture-resistant plasterboard products ensures your outdoor room blends seamlessly with your indoors, flowing through sliding glass or French doors in an open-plan layout. Install kitchen and barbecue amenities to create an outdoor cooking zone. Stone tiling creates a versatile, hard-wearing surface with style.

Simple wood and metal furniture adds industrial chic and provides the perfect setting for a leisurely alfresco meal.

Pops of colour say summer all year round in this versatile outdoor space.



Mix up chairs and benches to allow versatile seating options for guests, while creating interest and a relaxed style.



Indoor/outdoor rug, harvest weave in granite/oatmeal 1.7m x 2.4m \$970 **Armadillo & Co** www.armadillo-co.com; Adelphi dining table 161cm x 95cm in black \$1,099, bench \$499, Heston outdoor dining chair in black \$89 each **Freedom** www.freedom.com.au; Shibori linen table runner 45cm x 145cm \$87 **Life Interiors** www.lifeinteriors.com.au

The Gyprock Plasterboard Range

The many varieties of Gyprock® plasterboard help you get the most from your home, providing enhanced performance to create a more comfortable, quiet and durable environment for your family.

GYPROCK SOUNDCEK™

A high density plasterboard with increased noise absorption properties to help create quiet zones in your home. Combined with Bradford SoundScreen™ insulation it is ideal for walls and ceilings in home theatres, bedrooms, ensuite bathrooms and studies.

GYPROCK AQUACHEK™

Specially developed for use in wet areas, Aquachek has a moisture-resistant core, face and back. Because Aquachek is not subject to moisture movement and has extremely low water-absorption characteristics, it provides an excellent, stable substrate for ceramic tiles in bathrooms and laundries.

GYPROCK® SENSITIVE

Gyprock Sensitive is the only residential plasterboard to be approved by the National Asthma Council Australia Sensitive Choice® program. Its hypoallergenic formula contains a special additive that resists the growth of mould to keep that fresh new home feeling for longer and makes it ideal for use throughout the homes of asthma and allergy sufferers. Its moisture-resistant properties also make it an ideal choice for bathrooms and laundries.

GYPROCK SUPERCHEK™

Gyprock Superchek's reinforced core reduces the damage caused by knocks and bumps while the heavy duty lining paper provides a more scuff-resistant surface, making this plasterboard ideal for high-traffic areas like hallways and stairs. The denser core and high recycled content also provide additional sound insulation.

GYPROCK® PLUS

This quality standard 10mm plasterboard provides a smooth finish on walls for all areas of the home where no specific impact, acoustic or moisture resistance is required.

GYPROCK SUPACEIL™

Developed specifically for use in ceilings, Supaceil is a specially reinforced 10mm plasterboard designed to provide a smooth, flat finish for all areas of the home where no specific fire, acoustic or moisture resistance is required.

CSR - Building in Style

CSR is the name behind some of the market's most trusted and recognised building product brands including: PGH™ bricks and pavers, Cemintel™ cladding, Monier™ rooftiles, Bradford™ insulation and Viridian™ glass to name a few.

Each brand offers a huge range of products to help create your perfect home with guaranteed performance and exceptional style.

See the full range at csr.com.au



GYPROCK PRODUCTS ARE AVAILABLE THROUGH GYPROCK TRADE STORES, BUNNINGS WAREHOUSE AND SPECIALIST PLASTERING OUTLETS. TO FIND YOUR NEAREST RETAILER, VISIT GYPROCK.COM.AU

The Gyprock Cornice Range

← *Concerto*

← *Tempo*

← *Presto*

Seeing is believing

See how your favourite Gyprock cornice looks in a variety of room styles with your choice of wall colour, ceiling height and lighting. Choose from a range of skirting board, architrave and door handle styles to complete the look.

Visit visualiser.gyprock.com.au



GYPROCK ALTO™

Alto complements any contemporary space with a classic sensibility that's never over the top. A sassy 10mm step along the ceiling edge creates a crisp shadow for any modern home – the 90mm profile is uncomplicated but appealing, drawing the eye to its stylish format.

GYPROCK ARIA™

A compact 75mm cornice, Aria delivers a style that never goes off trend. Its subtle, slimline profile with an understated centre deflection is perfect when you are looking for unobtrusive elegance, especially in bedrooms or utility rooms.

GYPROCK® TRIO

Balance classic and contemporary elements with Trio, a powerhouse profile with its three-step 75mm format and strong, clean lines. It suits not just an ultra-modern space, but also blends well in a more traditional home.

GYPROCK® DUO

The simple, strong profile design of Duo features modern lines for a short, sharp statement. Duo's 50mm size is suited to modern homes and would also complement Art Deco style décor.

GYPROCK CONCERTO™

With a combination of smooth curves, distinctive lines and a sharp centre step, Concerto is ideal to incorporate an air of formality into a bedroom or living area. Throughout the day, the dramatic shadowing

effect of this 90mm cornice shifts the mood of the room, instantly adding depth of character and interest. Concerto can be installed with the stepped edge either facing up or down to create different effects.

GYPROCK SYMPHONY™

Music to any homeowner's ears, Symphony creates harmony with its softer curves, especially ideal for rooms with lower ceilings. Inspired by European master craftsmen, 75mm Symphony has a naturally more traditional style, combining a strong shadow line and multi-dimensional curves to create an attractive wave-like effect.

GYPROCK TEMPO™

For a well-delineated design edge, Tempo is a popular choice for the latest homes. The multiple shadow lines and 90mm profile create a sense of volume and work well in open plan living areas. If you are revamping an existing room, Tempo can be used over 55mm Cove cornices, which makes renovating so much easier.

GYPROCK® PRESTO

This simple profile makes a big statement. Featuring a 90mm flat face that creates a 15mm step along the ceiling, Presto adds a sense of height in a contemporary home.

GYPROCK® COVE

A classic profile, Cove has long been a standard with Australian builders. Its functional profile is available in 55mm, 75mm and 90mm sizes.

Manufactured for Life Warranty

Gyprock continues to lead the market with premium quality products that are the preferred choice of building professionals. All Gyprock products are covered by Gyprock's Manufactured for Life warranty – the longest in the Australian plasterboard industry.

GYPROCK®
Everything else is just plasterboard



GYPROCK®

Everything else is just plasterboard



GYPROCK® Sensitive

A better choice for asthma and allergy sufferers

**2.3 million
Australians suffer
from asthma and
one in three of us
has an allergy**

Gyprock Sensitive has been approved by the National Asthma Council Australia's Sensitive Choice® program as a better plasterboard choice for your home:

- Enhanced mould resistance
- Improved moisture resistance
- Low in volatile organic compounds (VOC)
- Good Environmental Choice Australia (GECA) accredited



Expect more from Gyprock®

see more at gyprock.com.au/sensitive

CSR